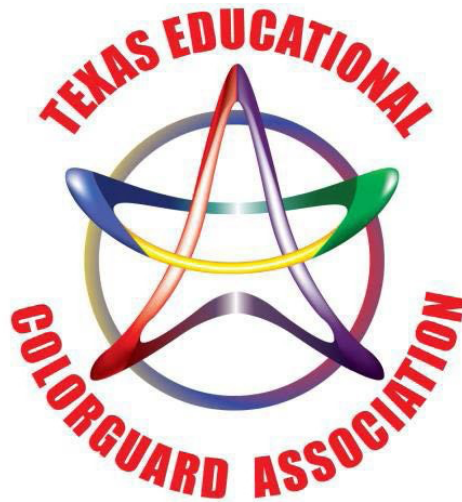




Earl Warren High School Invitational

April 10th, 2021



Hosted By:

**Earl Warren HS Warrior Band Boosters
And Winter Guard Programs.**

Earl Warren HS TECA Showcase Information

LOCATION, DIRECTIONS AND MAP:

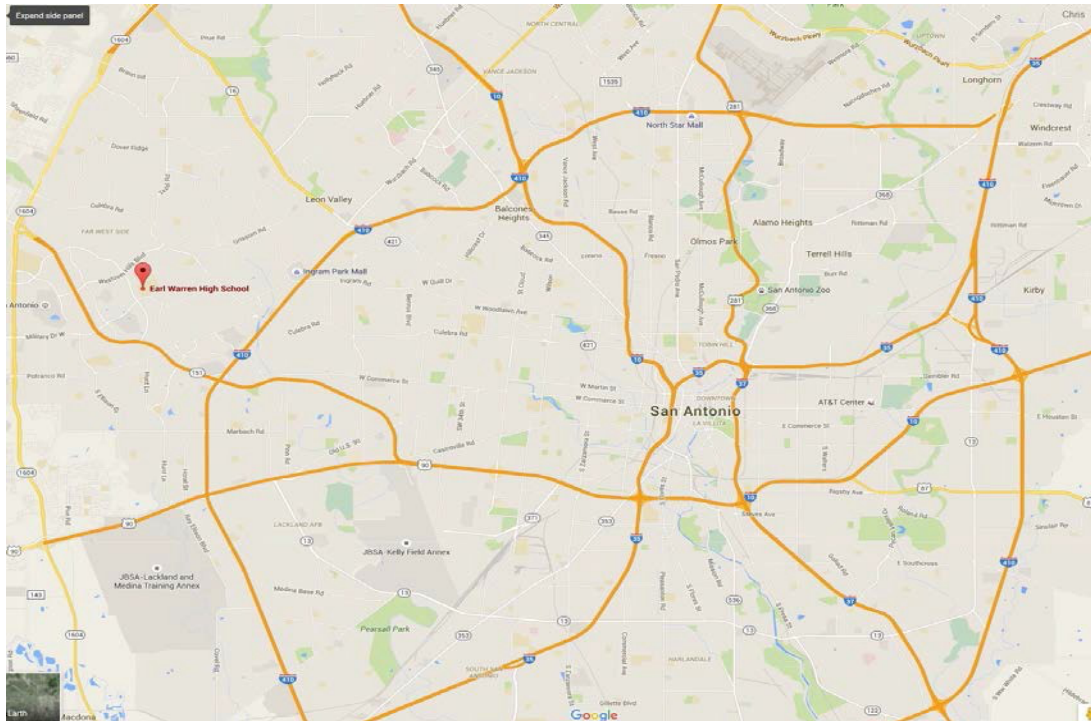
The Earl Warren HS TECA Showcase will be held on Saturday, April 10th, 2021 at Earl Warren High School located at 9411 Military Drive W San Antonio, TX 78251.

From Loop 410 West:

Take Loop 410 W to the 151 W exit toward Sea World. Take 151 W to the Hunt Lane Exit, Approximately ½ mile. Exit Hunt Lane and turn right. After approximately 1.0 mile turn right onto Military Drive. Warren will be on your left hand side. All will enter using the Main entrance.

From the Loop 1604 East:

Take Loop 1604 East to the 151 East exit (Toward Sea World). Take 151 to the Military Drive exit. Exit and turn left on to Military Drive. Proceed approximately 1.0 mile down Military Drive and Warren High School will be on your left. All will enter using the main entrance.



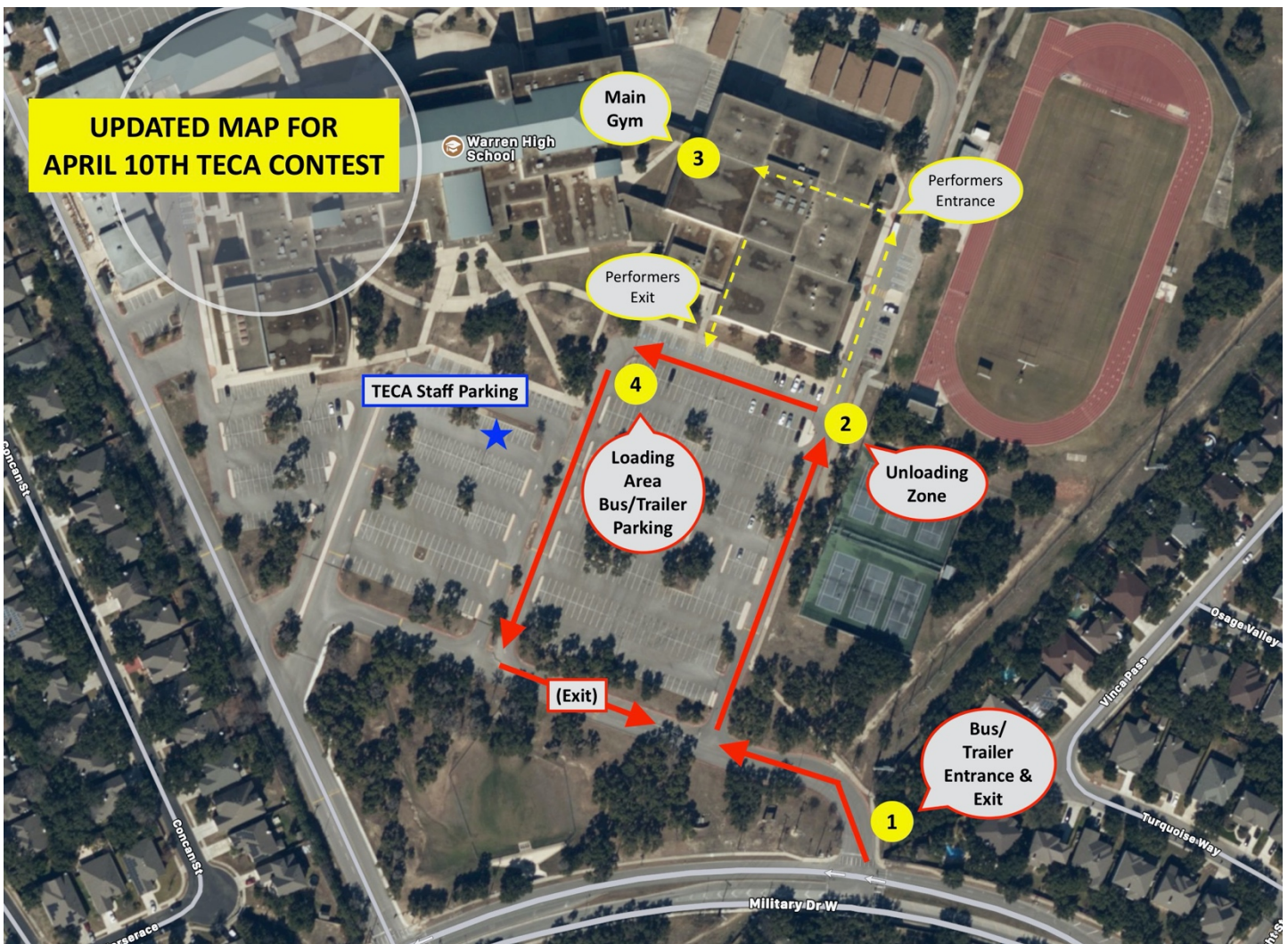
PARKING:

Buses and equipment trucks are to enter at the 9411 Military W Main Entrance.

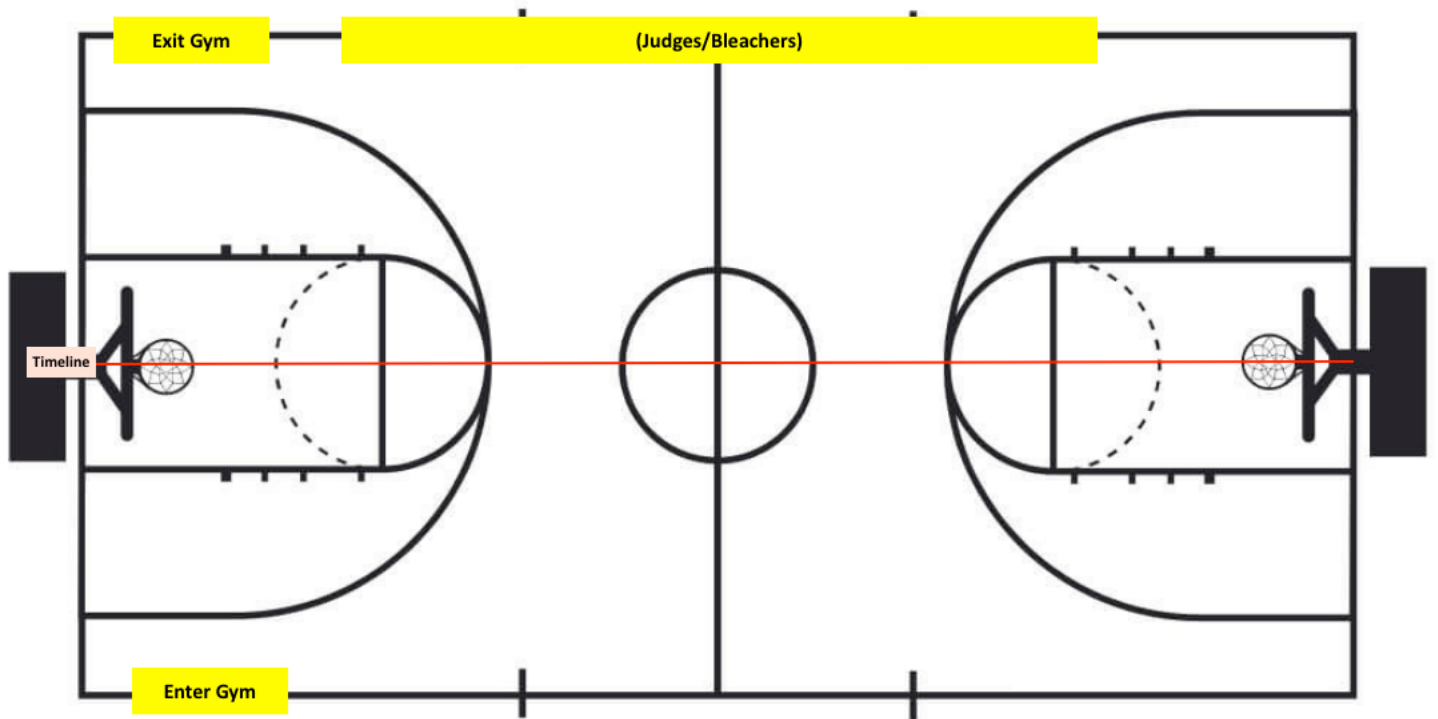
Busses and equipment trucks for the Guards and Percussion will be unloaded at the check in / drop off point located next to tennis courts on side of school. Follow map to drop off area.

Earl Warren High School Map with traffic flow

1. Bus & Equipment Truck Entrance (9411 Military W)
2. Check-In: Bus and Equipment Unload
4. Bus and Equipment Truck Load/Pick Up



Performance Gym:



CONTEST INFORMATION

All contest rules and regulations from the 2021 TECA Constitution and By Laws and the 2021 WGI Rule Books will be followed.

All props, performance shoes and equipment must be padded and taped according to the TECA and WGI rule books specifications. Please refer to the 2021 WGI Colorguard and Adjudication Manual and Rule Book for further information.

CHECK-IN

The check-in table for all participants will be located outside near the tennis courts. Performing members and staff must check in prior to entering the building.

THERE ARE NO HOLDING AREAS, UNITS WHO ARRIVE BEFORE THEIR SCHEDULED TIMES MUST REMAIN ON THE BUS.

OFFICIAL WARM UP TIME AND PERFORMANCE

We will be utilizing a **HORIZONTAL TIMELINE** flow for the performance area.

Indoor Guards/Percussions will enter through the back right and exit through the front right.

(See attached Performance Gym Map)

Your Performance time is in a 20min interval this includes setup, warm up, performance and floor folding in the gym. The first 10min will include setup and warm up. The last 10min will include the performance and floor folding. Directors if you do not need a warmup can simply walk in the gym setup, perform and head out. If you wish to have music during warm up, please provide your own sound system.

NO SPECTATORS WILL BE ALLOWED!

POST PERFORMANCE

After you exit the performance area, staff members should make sure that equipment is loaded, and students return to bus in order to leave campus immediately. Please fold floors quickly and exit the area to prevent a "traffic jam." Comments and score sheets will be sent to you electronically.

2021 TECA EVENT T-SHIRTS

No on-site merchandise will be made available for purchase at this competition. Instead, TECA is offering an online store that will be open until May 3rd.

Make sure you act fast! The link is available on the TECA website.

ADDITIONAL INFORMATION

You may get online information and help via the TECA website at

<http://www.go-teca.org>

If you have any direct questions for me as the show host, my email is jermster09@gmail.com and my cell phone number 210-264-1399.

