



Weslaco East High School Invitational

January 25, 2020



A TECA sanctioned contest hosted by:

Weslaco East HS Starlettes

Weslaco East Wildcat Regiment

Wildcat Regiment Band Boosters

Contact Information:

Laura Cedillo-Rivera, Starlettes Director: LACEDILLO@wisd.us

Armando Cuellar, Director of Bands: AECUELLAR@wisd.us

Weslaco East High School Invitational Information

LOCATION, DIRECTIONS, AND MAP:

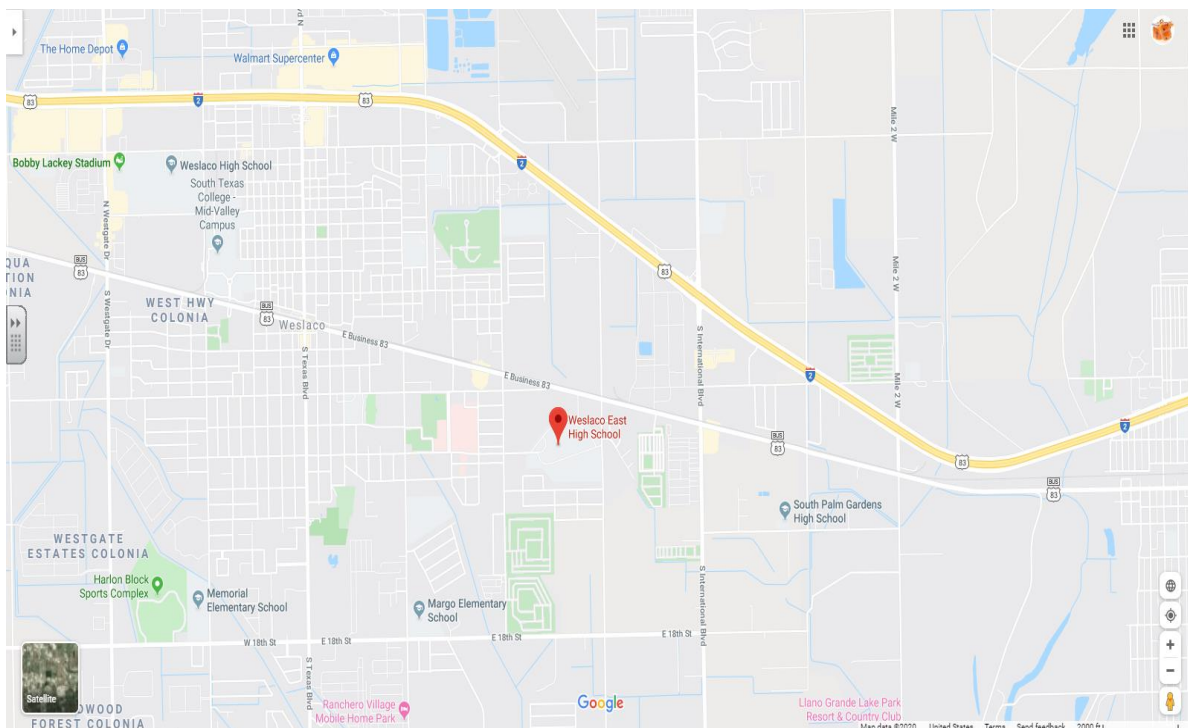
Location: *Weslaco East High School, 810 S. Pleasantview Dr., Weslaco, TX 78596*

FROM SAN ANTONIO AREA

Get on I-37S/US-281 S. Continue on I-37S. Take US-281 to E Expressway 83/E Frontage Rd in Weslaco. Take the exit toward Airport Dr/Pike Blvd from I-2. Merge onto E. Expressway 83/E Frontage Rd. Turn right onto N Airport Dr. Turn left onto E. 8th St. The entrance should be straight ahead.

FROM CORPUS CHRISTI AREA

Head southwest toward I-37N. Continue on I-37N. Take US-77 S, I-69E S and I-2/US-83 W to E Expressway 83/W Frontage Rd in Weslaco. Take the exit toward Airport Dr/Pike Blvd from I-2/US-83 W. Merge onto E Expressway 83/W Frontage Rd. Turn left onto N Airport Dr. Turn left on E 8th St. The entrance should be straight ahead.

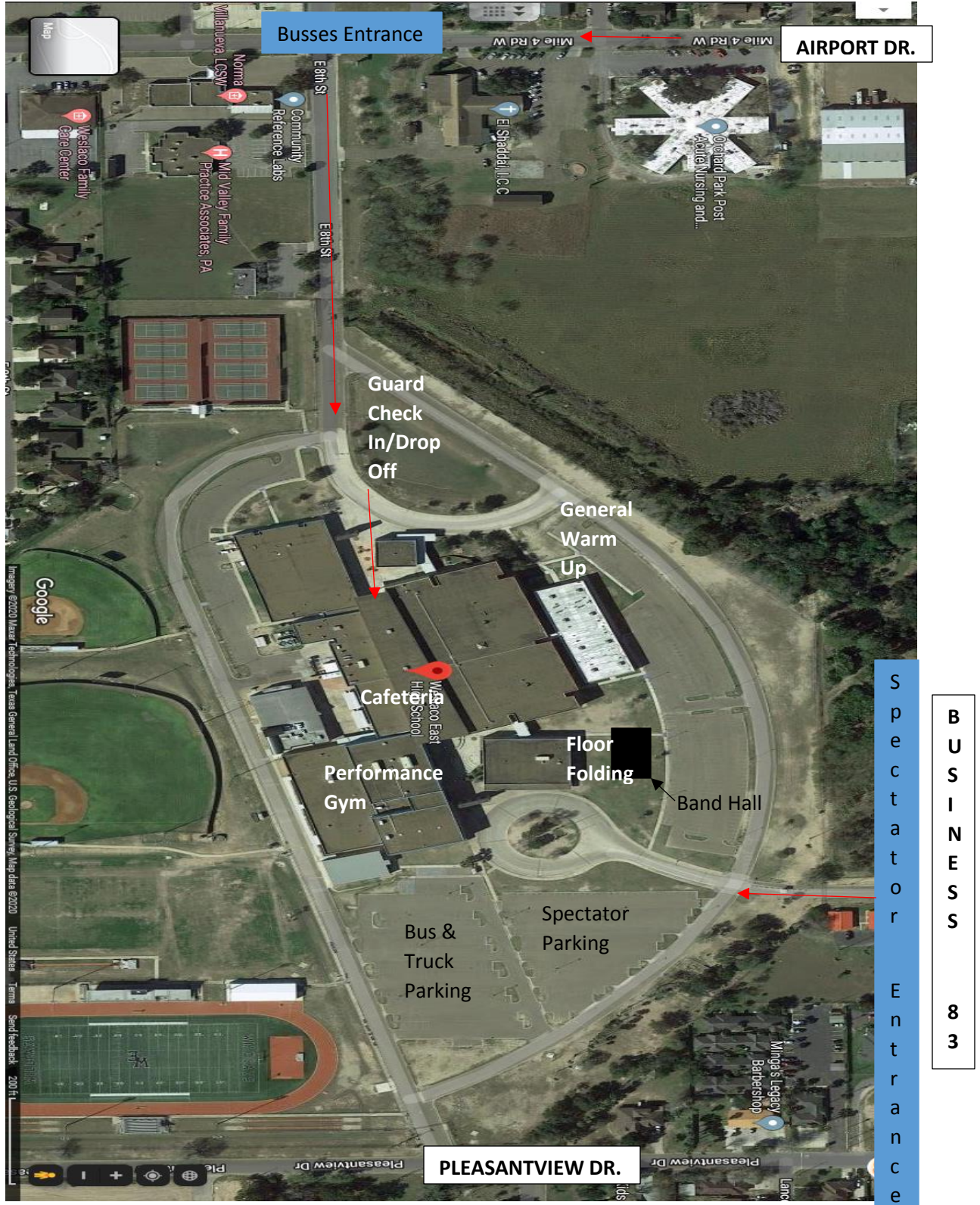


Busses and trucks will unload in our bus area where guard check in is located. They will then move to park by our stadium. This area will serve as both loading and unloading.

Parking:

Buses will continue down Airport Dr. (Mile 4 Rd W) & enter through 8th St. (this leads to our bus area)

Spectators will enter from E. Business 83 *the gate off of Pleasantview Dr. is usually closed Sat.*



CONTEST INFORMATION:

All Contest rules and regulations from the 2020 TECA Constitution and By-Laws and the 2020 WGI Rule Book will be followed.

All props, performance shoes and equipment must be padded and taped according to the TECA and WGI rule book specifications. Please refer to the 2019-2020 WGI Colorguard and Adjudication Manual and Rule Book for further information.

Check In:

The check-in table will be located in the main building by the Staff Development room as you enter from the bus area (Guard Drop Off). Performers must show the Check-In Representative that their equipment is correctly padded and taped. Directors will be provided a map of the school as well as the schedule with performance times at this time.

Performing members and crew member must check in at the check-in table prior to warm up. Admission will be given to 2 directors, 2 bus drivers, and up to 10 student crew members. Additional admission may be purchased at the check-in table for additional crew members at a cost of \$5 per student

Holding Area:

Tables will be set up in the cafeteria for each group to store their personal items.

Props/Floors and larger equipment may be store in the hallways just before the check-in tables.

Concessions will be available in the gym lobby for anyone to purchase. Outside food or drink will not be allowed inside the school.

The cafeteria and within the school buildings are traffic areas only. Students will not spin, toss, play or maneuver equipment inside any of the buildings at any time other than in designated areas. If you need any extra equipment warm up, you may do so outside in a designated area.

OFFICIAL WARM UP AND PERFORMANCE TIMES:

Body Warm Up

When it is time for your group to be “READY”, please report to the ready table inside the cafeteria. You will be escorted by a monitor from there to each warm up area.

Body Warm up will be within our main band hall room. Students may stretch or do a body type of run through. NO equipment will be allowed during this segment of the official warm up time.

A sound system will be made available to you in the warm up areas.

Equipment Warm Up

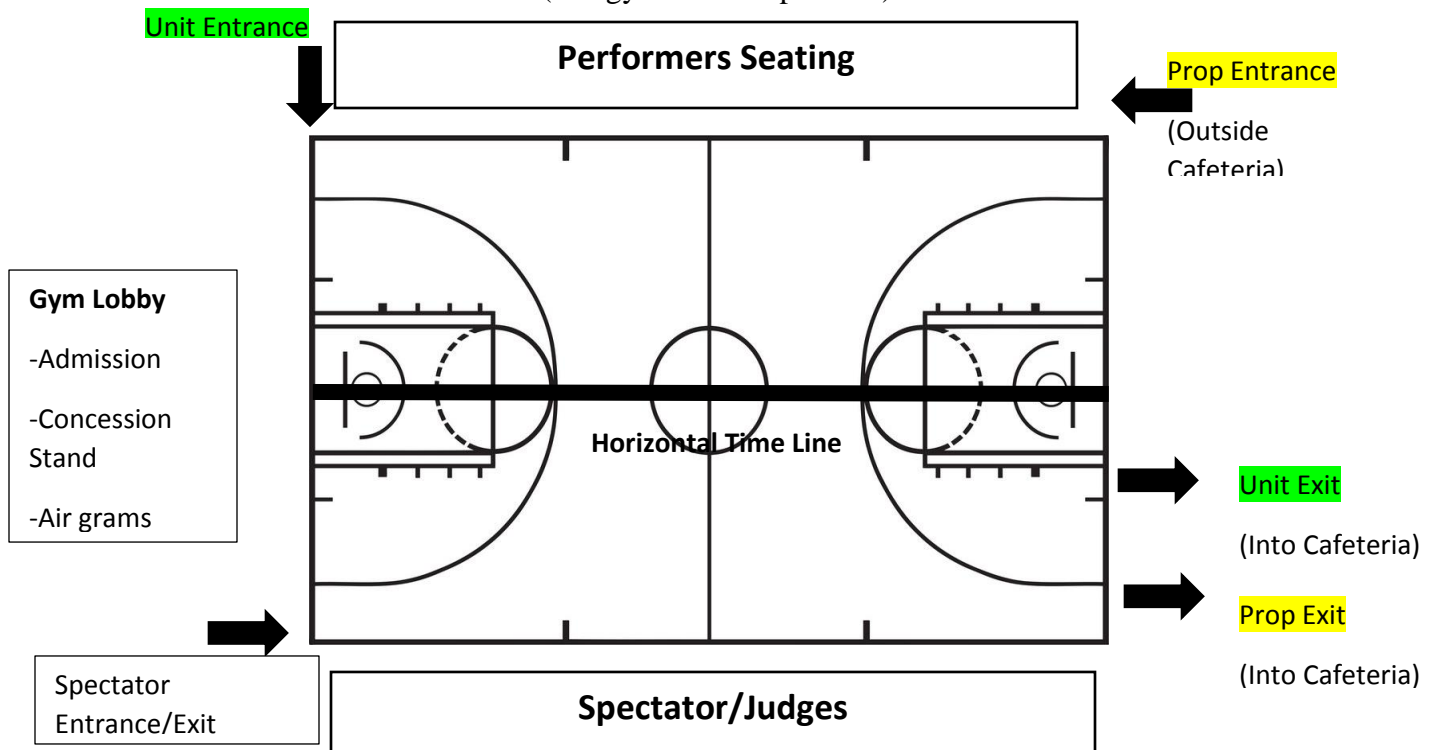
After Body Warm Up, your group will be led to the Equipment warm up being held within our small gym and will be placed in holding until your warm up time begins.

A sound system will be made available to you in the warm up areas.

Performance

After Equipment Warm Up, your group will be led to the performance area in our main gym. You will be placed in holding until your official set up and performance time begins.

We will be utilizing a HORIZONTAL TIME LINE for the performance area.
(See gym floor map below)



Post-Performance

Once your performance is complete, you will exit the performance area as directed in the contest flow (see map above). Staff members will need to make sure that all of their equipment is put away and that nothing was left on the performance floor. They can then proceed to the sound table to pick up your show music.

CAPTAINS ONLY RETREAT will follow the last performing group as scheduled. There will be an announcement made as to where captains will meet.

As always, there will be a critique session hosted by the adjudicators and TECA for you to attend. This will be done in the band hall (the same building as body warm up). Thank you for listening to your comments before entering critique. If you have a problem with any of your judge's comments, you will need to fill out the **WGI Color Guard Instructors Form** from the WGI Color Guard and Adjudication Manual and Rule Book.

Spectator Admission

Wrist bands will be sold at the spectator entrance. All spectators must have a wrist band to enter the competition. Admission is \$8.00 for adults and \$5.00 for students. Cash only.

Concessions

Concessions will be available throughout the day in the gym lobby. No outside food or drink will be allowed inside the school.

Souvenirs & Shout Outs

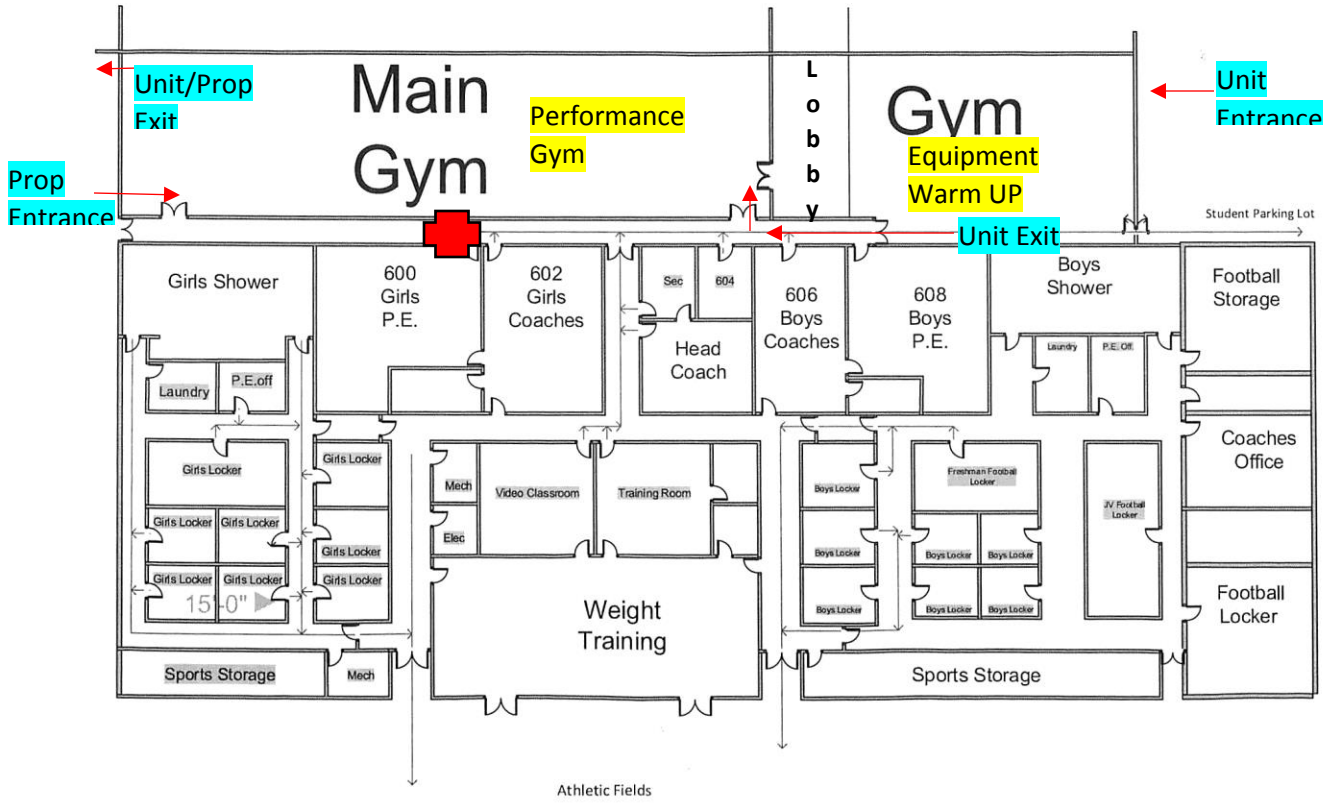
If you wish to show support and congratulate your participants, shout-outs in the gym will be available for purchase- \$3 for one or \$5 for two. Cash only.

Souvenirs will also be available for purchase.

Online Help and Information

TECA Website: <http://www.go-teca.org>

Gymnasium



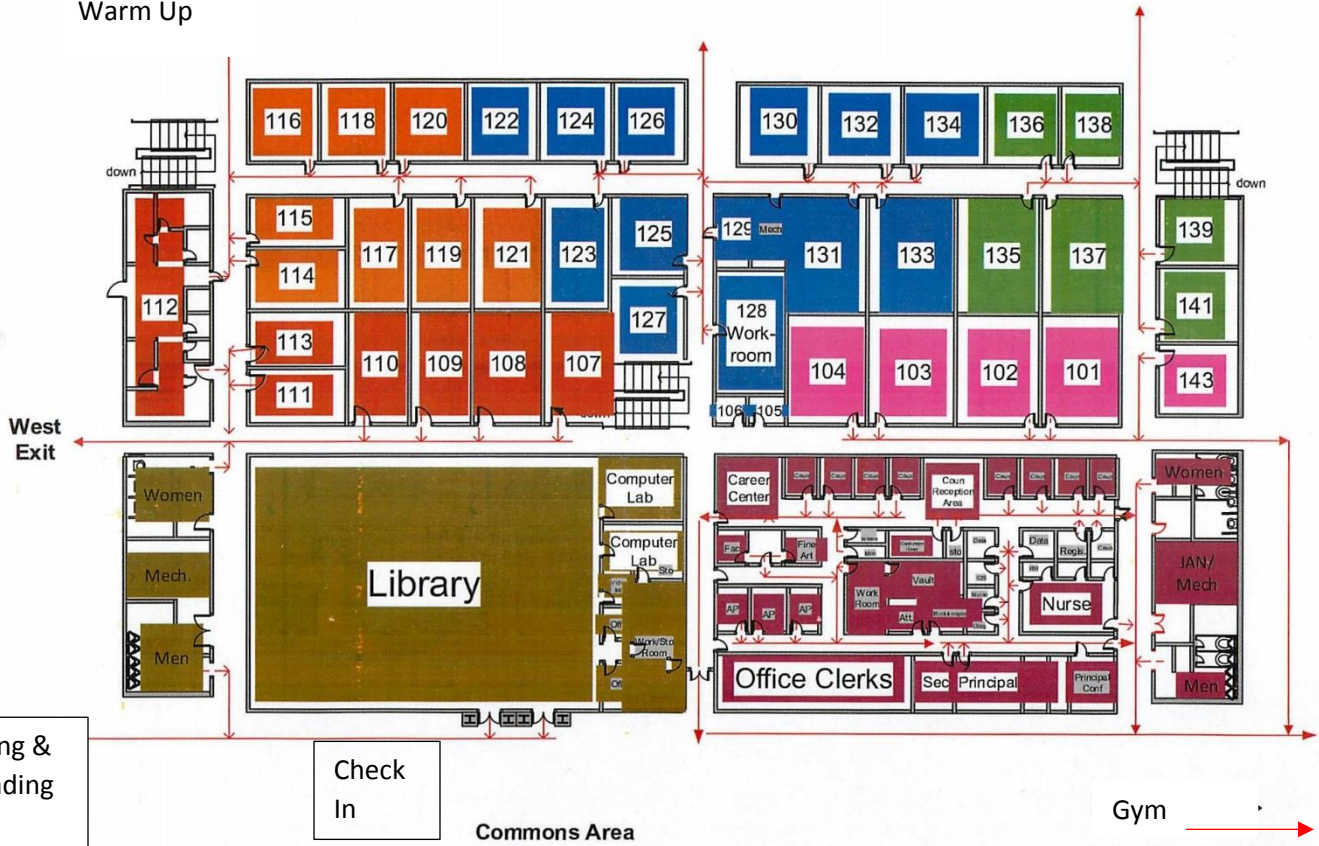
Main Building- 1st Floor

Fire Exit Route

First Floor

WEHS Teacher Parking Lot

General Warm Up



Loading & Unloading Area

Check In

Commons Area

Gym →

J
R
O
T
C

P
r
o
p
o
s
i
t
o
r
a
g
e

Staff Development Room

CAFETERIA
Unit Holding Area

Band Hall

