

Texas Educational Colorguard Association
South Zone Colorguard Preliminaries
March 24th, 2018
Hidalgo High School, Hidalgo



**A TECA Contest
hosted by the**

Hidalgo and Ida Diaz Color Guards and Band Boosters

Performance Start Time at 11 AM

For questions contact:

Color Guard Director: Denelle Acosta

ADMISSION:
ADULTS \$12
STUDENTS \$8

Dear Directors,

Welcome to Hidalgo Early College High School! We are excited to have you here at the TECA South Zone Colorguard Prelims. We hope that you have a great experience at this event.

The Location for this contest is:

Hidalgo Early College High School
910 E Pirate Drive
Hidalgo, TX 78557

We are excited to host you and hope that you will take some time to review this packet of information so that you will be prepared for your experience in our facility. We are doing our best to be as informative as possible, but as you already know flexibility is needed as some issues come up last minute. We will do our best to troubleshoot in a swift, efficient manner. We hope that this packet will make your contest experience a great one!

Attached to this packet

- I. Directions & Parking
- II. Pre--Performance/Unit check -in
- III. Contest Flow
- IV. Award Ceremony
- V. Critique
- VII. Contact info
- VIII. Meal Pre-Order Form

Denelle Acosta

Denelle Acosta
Hidalgo/Ida Diaz Color Guard Director

PARKING AND LOADING AND UNLOADING:

The Front entrance parking lot will be used for all parking needs for spectators. All Overflow will be sent to Ida Diaz Junior High next door. All busses, trailers, and trucks will need to use the bus lot across the street from the Junior High. Unloading and loading will be in the bus loop across from pirate stadium. The entrance is the second school entrance towards the west. Buses and Trucks will get 10 minutes to unload. No vehicles will be allowed to park in the loading and unloading area. All Spectators will enter in through the 1st entrance to the east at the front of the school. Signs will be posted.

PRE--PERFORMANCE/UNIT CHECK-IN

UNIT CHECK-IN

There will be one check-in location for all percussion and colorguard units at this contest. If you have props to unload, you may do so at this time. At check-in you will meet your official guide who will guide you throughout your warm up and performance.

★ Performers, 10 student crew members, 3 directors, and 1 bus driver

★ Admission is \$12.00 for adults. \$8.00 Students and Children

SHIRTS AND SHOUT-OUTS/AIR GRAMS

TMF will be on site with official t-shirts.

Shout-outs for purchase: \$3.00 each or 2 for \$5.00. Cash only. We will adhere to a strict limit of 10 shout-outs per unit.

Pre--Performance Procedure

After checking in your unit, please take your props to prop storage, and take equipment to inspection. Please make sure all equipment and props are properly taped and padded per TECA and WGI rules. At this point units may go to the cafeteria to their units table. If general warm up is desired there are multiple spaces available. The courtyard is designated for guards.

CONTEST FLOW

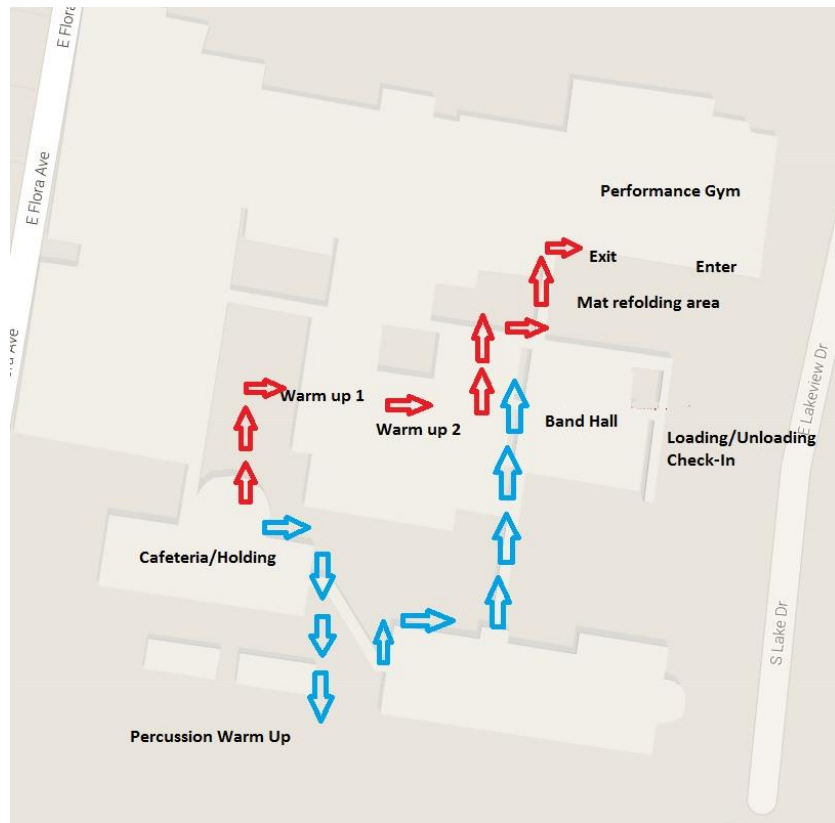
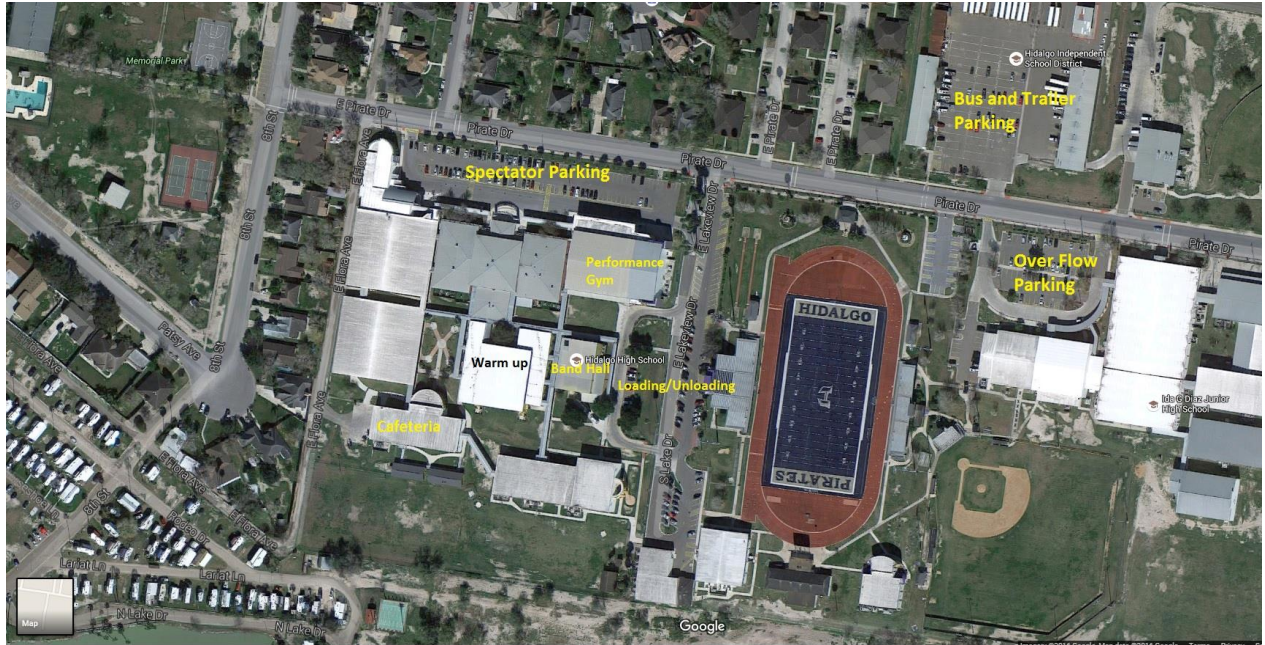
GROUP PHOTO

Lifetouch national school studios will be on site to take group photos. There is a time on the official schedule assigned for your group, but you are not limited to that time. If you would prefer to have your group photo taken after your scheduled time, you will need to go to the photo area during a break. Please be aware that photos are scheduled about an hour prior to performance times so their breaks are also about an hour earlier.

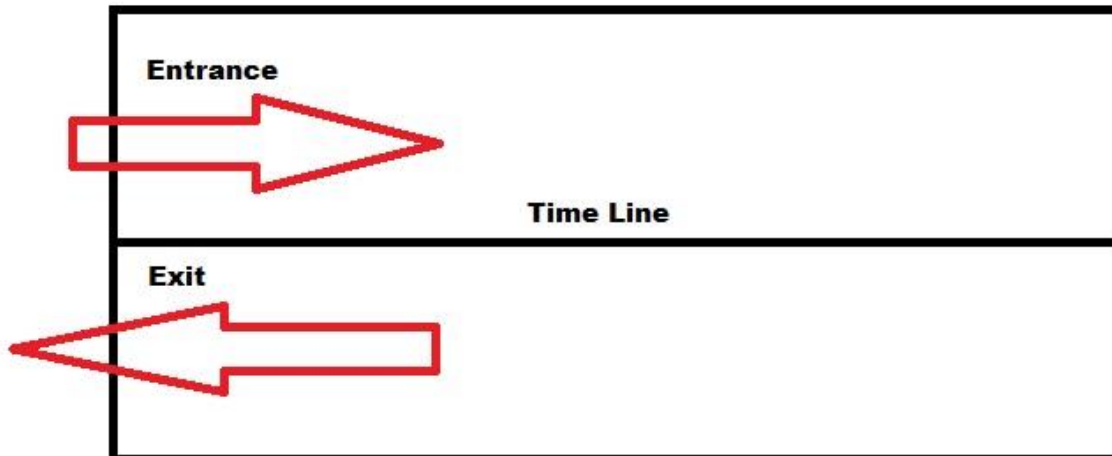
WARM UP

After your photo time, when you are ready to start timed warm up, your guide will lead your unit to the dance room for body warm-up. After body warm up your guide will guide your unit out the back door of the dance room to the practice gym for equipment warm-up. After equipment warm-up your unit will be lead to the performance gym. After performance your unit will be lead

out to the field to fold your floor, from there your unit will be lead back into the build to storage equipment and props. Use the main general entrance/exit to enter the gym to watch other units. Pictures and graphs below show the contest flow.



Spectator Seating



POST -PERFORMANCE/AWARD CEREMONY

Full units will report to the practice gym to line up for the retreat.

CRITIQUE

Critique will be held in the Hidalgo Band Hall

- The Band Hall is the building next to check in.

Contact Info:

Any questions, please contact:

Denelle Acosta - Hidalgo Color Guard Director/TECA Treasurer

(859) 462-0855

dutdutdenelle@gmail.com

Concessions will be available to everyone. Outside food or drink will not be allowed inside the school.