



**T.E.C.A.**

**Building better guards for better bands**



SATURDAY 3/25/2017

T.E.C.A. STATE PRELIMS

A T.E.C.A. SANCTIONED EVENT

Hosted by the Southwest High School Band

For more information, contact: Natalie Ball (210) 622-4530  
nball@swisd.net

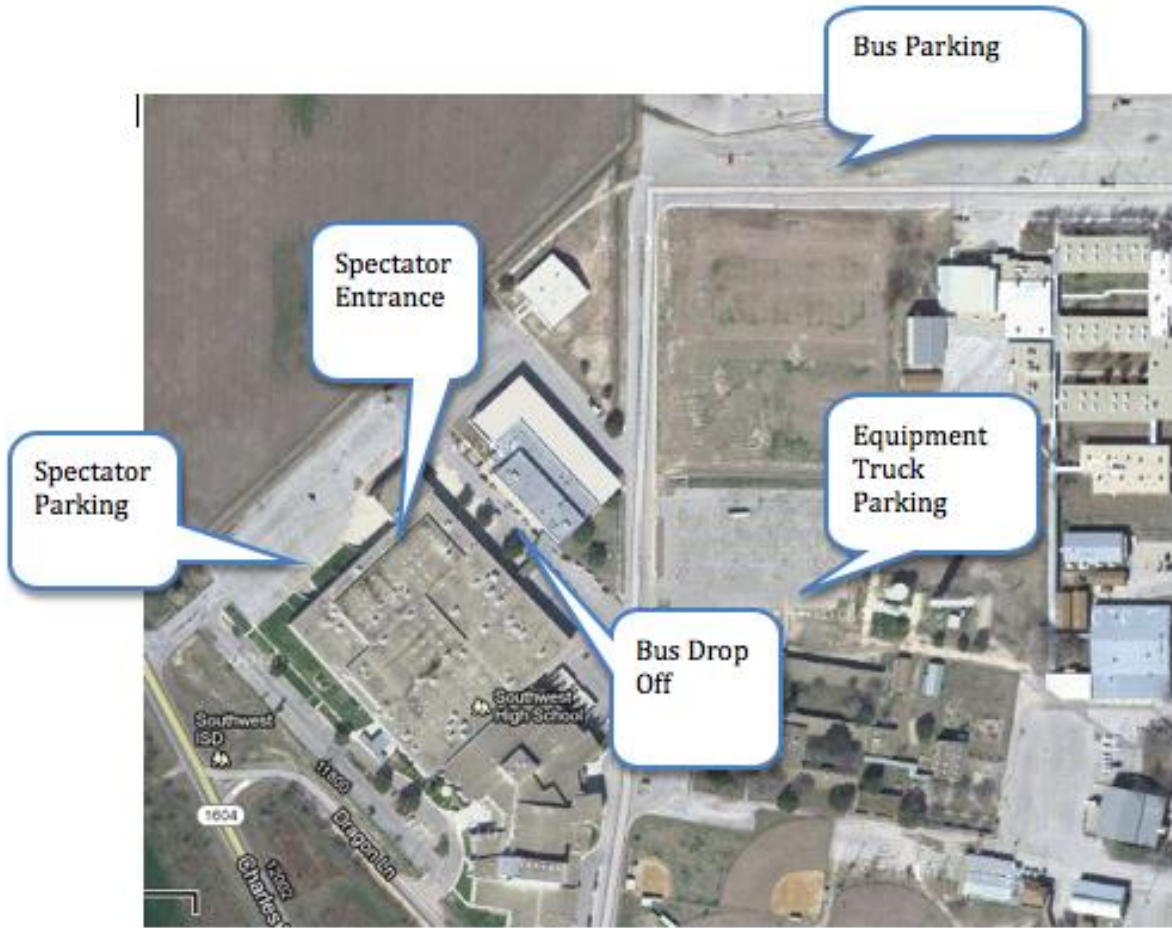
# BLOWN UP MAP OF THE AREA

Location, Map:

Southwest High School  
11914 Dragon Lane  
San Antonio, TX 78252  
(210) 622-4530 (Band  
Hall)



# MAP OF SCHOOL AREA



## **CONTEST INFORMATION**

### **All Contest Rules and Regulations from the 2017 T.E.C.A. Constitution and By-Laws and the 2017 WGI Rule Book will be followed.**

#### **Admission (spectators). All proceeds benefit the T.E.C.A. Scholarship Fund**

Students: \$5

Adults: \$10

#### **Concessions**

Concessions will be available all day. There will be a concession stand in the cafeteria and there will be a concession stand running by the performance gym. **Outside food or drink will NOT be allowed inside the school at any time during the day.**

#### **Souvenirs**

Various outside vendors will be selling items throughout the contest. There will also be airgrams (\$3 or 2 for \$5) available for purchase during the contest.

#### **Check In**

The check-in table will be located at the entrance of the cafeteria. Performers, Crew, and Directors will receive a stamp to distinguish participants from spectators. Performing members and crew members will need to check in at the check-in table when they arrive on campus. **Admission will be given to all performing members, 1 director plus 10 student crew members. Any extra members will be asked to pay the regular admission price.**

Your school will be pre-assigned a table for which to store your equipment and will be assigned a Student Monitor that will walk you through all phases of the contest. Please understand that tables are assigned by school, not by performing group (i.e. if a school has an "A" group and a "B" group, they will still receive one set of tables). Please do not leave valuables unsupervised. The second floor of the school will be off limits, please make sure your students stay on the first floor.

**Students are NOT allowed to do any equipment work in the cafeteria.** If you need extra equipment warm-up, you may do so outside.

#### **Equipment Inspection**

At this point all equipment will be inspected. All props, performance shoes, and equipment must be padded and taped according to the T.E.C.A. and WGI rulebook specifications. Please refer to the 2017 WGI Color Guard and Adjudication Manual and Rule Book. Maps of the school and performance times will be available in the director's packet at the check-in table.

### **Glitter**

No glitter of any kind will be carried out onto the floor. This includes, but is not limited to, glitter in the performers hands, small containers, glitter in flags or glitter in any device that is used to toss, throw, or project glitter. There will be no exceptions. **This goes for performances as well as retreat!**

### **Official Photo**

Lifetouch National School Studios will be taking group and candid photos throughout the day. Group photos will be taken in the school foyer adjacent to the cafeteria prior to your warm-up time. Each unit will be led to the foyer from the cafeteria for the photo. From the photo, the unit will proceed to the Body Warm-Up.

### **Body Warm-Up, Equipment Warm-Up, and Performance Notes**

There will be a brief amount of time where travel outside will be necessary to get to and from the Body Warm Up. Body Warm Up will be in the Practice Gym. Students may stretch or do a body type of run through. **No equipment will be utilized during this segment of the official warm up time.**

After body warm up, your guard will be led to the P.E. Gym and be placed in holding until your equipment warm up time starts. A sound system will be made available to you if you need one.

After your Equipment Warm-Up, you will be led to the Performance Gym. You will be placed in holding until your official set up and performance time starts. Wait for the cue from the T.E.C.A. timing person.

After your performance, guards exit through the doors on the front right side (from the performers perspective) back into the cafeteria.

### **Sound Check**

Sound check will occur before each class. Please make sure your music is clearly marked with your groups name and given to the sound person in a timely manner. Please pick up immediately after your performance. Please have a back-up recording on you at all times.

### **Official Video**

There will be no official video taken at the zone championships.

### **Video Taping/Recording**

To comply with Federal Copyright Laws, each unit may have one person taping their performance. Taping will only be allowed within a designated area and will only be allowed for your unit's performance. Taping will not be allowed of any other unit or performance. Please refrain from posting video of your performance on Youtube, Facebook, etc...

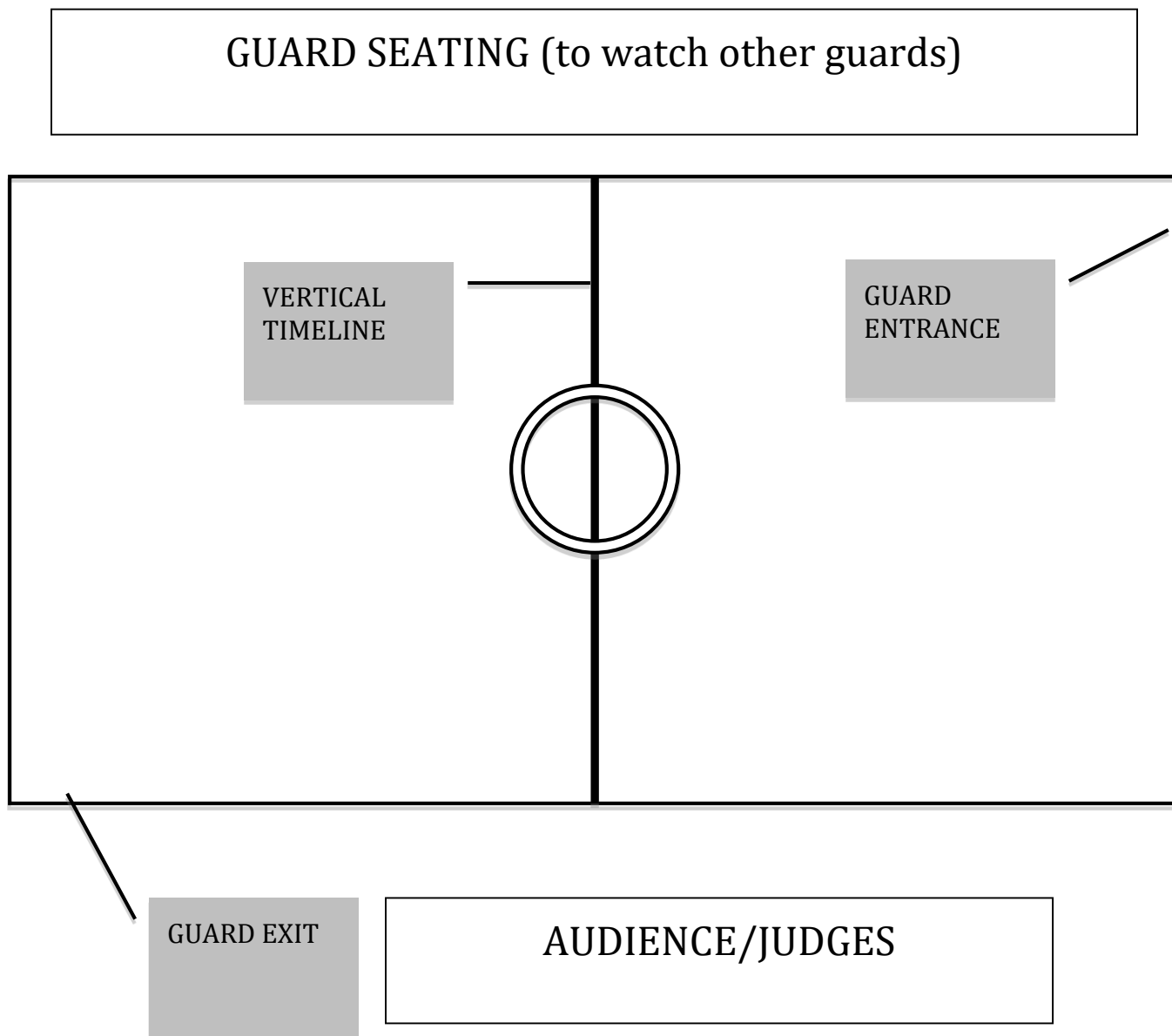
### **Additional Help and Information**

You may get additional information via the T.E.C.A. website at <http://www.go-teca.org>

You may also call the Southwest High School Band Hall at (210) 622-4530

You may also email Natalie Ball at [nball@swisd.net](mailto:nball@swisd.net)

**WE WILL BE UTILIZING A VERTICAL TIME LINE.** From the audience perspective, you will enter from the back right and exit front left.



**Post Performance**

The exit will lead you directly into the cafeteria where your table is.

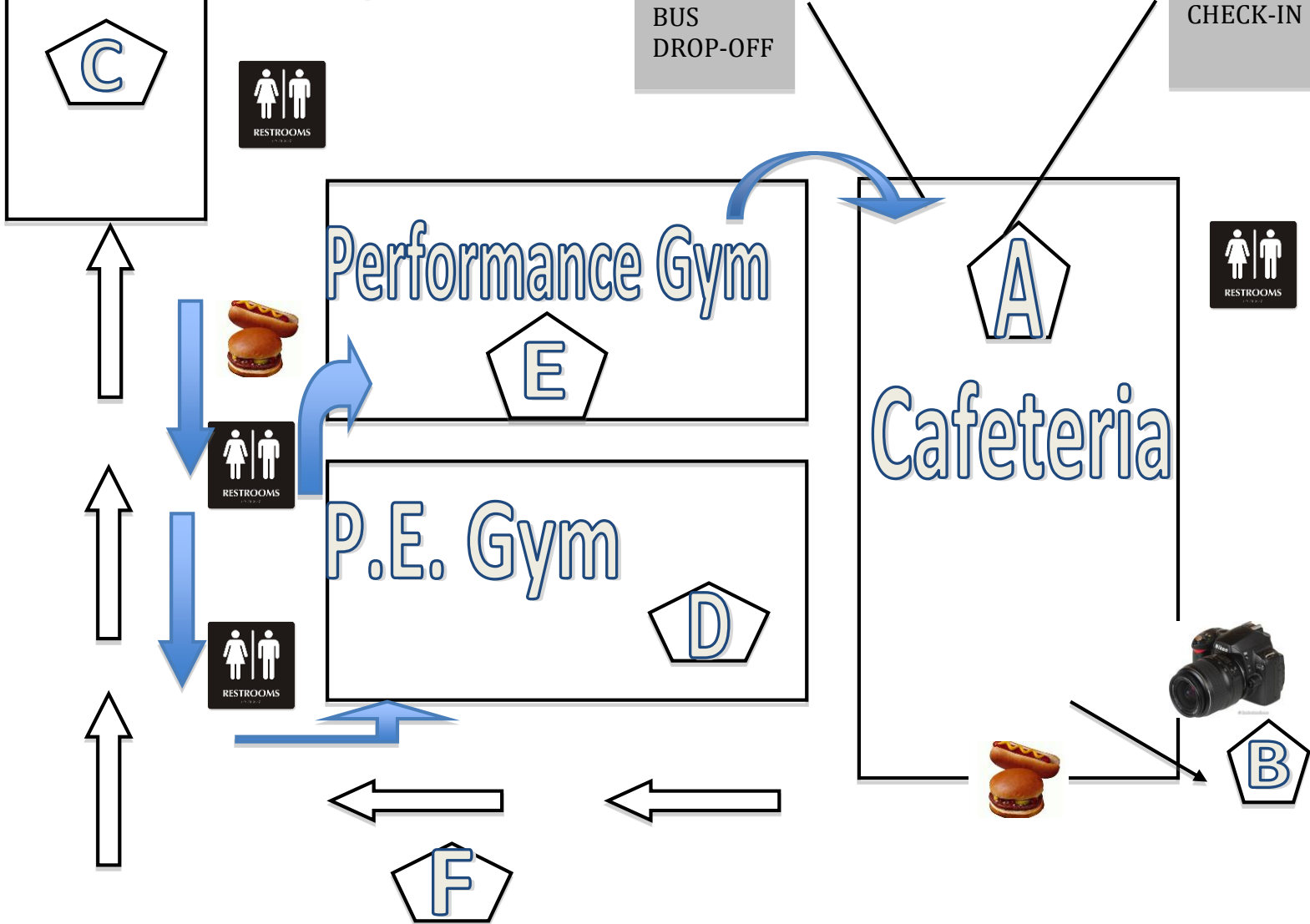
Students will need to start their “line up” in the cafeteria after the last classification of the last block before Retreat. There will be one retreat. Instructors will need to help with the line up of their students.

Please assist us in clearing the gym in a timely manner following retreat.

Judges tapes will be available via competition suite.

Critique will follow retreat in our ROTC room (see letter F on map)

# Practice Gym



- A: Check in/Guard Storage/Area to fold Floors
- B: Group Photo
- C: Body Warm Up
- D: Equipment Warm Up
- E: Performance Gym
- F: Critique (in ROTC area)