

Saturday January 28, 2017
Hidalgo Early College High School Gymnasium
A TECA Sanctioned contest hosted by the Hidalgo High School Color Guard





Dear Directors,

Welcome to Hidalgo Early College High School! We are excited to have you here at our 2nd annual color guard and percussion contest. We hope that you have a great experience at our event.

The Location for this contest is:
Hidalgo Early College High School
910 E Pirate Drive
Hidalgo, TX 78557

We are excited to host you and hope that you will take some time to review this packet of information so that you will be prepared for your experience in our facility. We are doing our best to be as informative as possible, but as you already know flexibility is needed as some issues come up last minute. We will do our best to troubleshoot in a swift, efficient manner. We hope that this packet will make your contest experience a great one!

Attached to this packet

- I. Directions & Parking
- II. Pre--Performance/Unit check -in
- III. Contest Flow
- IV. Award Ceremony
- V. Critique
- VII. Contact info
- VIII. Meal Pre-Order Form

Denelle Acosta

Denelle Acosta
Hidalgo/Ida Diaz Color Guard Director

I. Parking and Loading and Unloading:

The Front entrance parking lot will be used for all parking needs for spectators. All Overflow will be sent to Ida Diaz Junior High next door. All busses, trailers, and trucks will need to use the bus lot across the street from the Junior High. Unloading and loading will be in the bus loop across from pirate stadium. The entrance is the second school entrance towards the west. Buses and Trucks will get 10 minutes to unload. No vehicles will be allowed to park in the loading and unloading area. All Spectators will enter in through the 1st entrance to the east at the front of the school. Signs will be posted.

II. Pre--Performance/Unit check -in

Unit Check -in

There will be one check-in location for all percussion and colorguard units at this contest. If you have props to unload, you may do so at this time. At check-in you will meet your official guide who will guide you throughout your warm up and performance.

★ Performers, 10 crew members, 3 directors, and 1 bus driver

★ Admission is \$7.00 for adults. \$5.00 Students and Children

Pre--Performance Procedure

After checking in your unit, please take your props to prop storage, and take equipment to inspection. Please make sure all equipment and props are properly taped and padded per TECA and WGI rules. At this point units may go to the cafeteria to their units table. If general warm up is desired there are multiple spaces available. The courtyard is designated for guards, and various fields and parking lots are available for percussion.

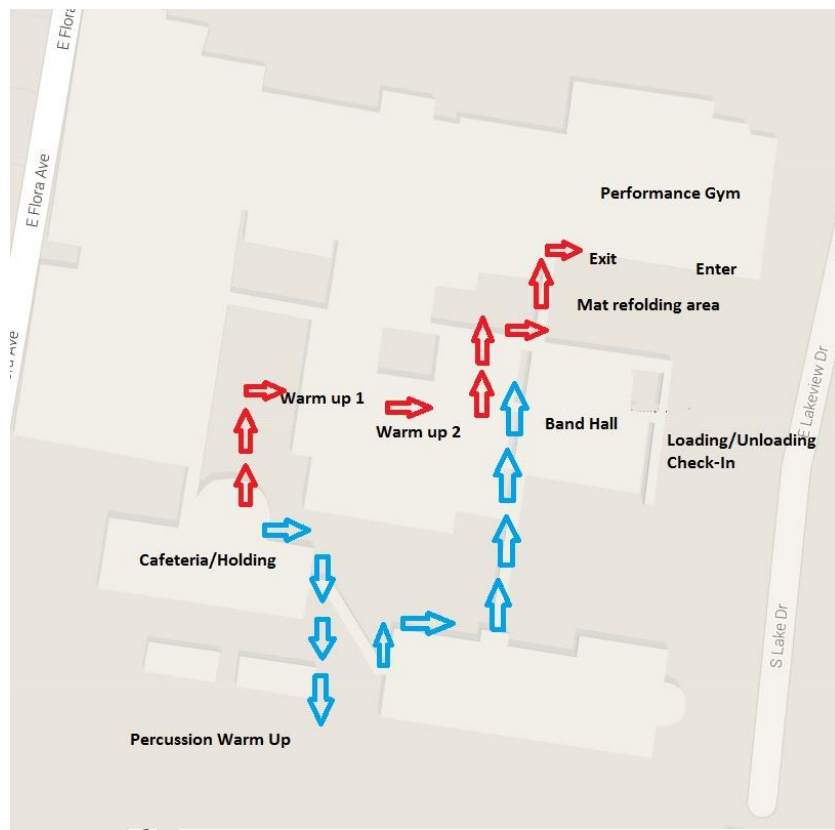
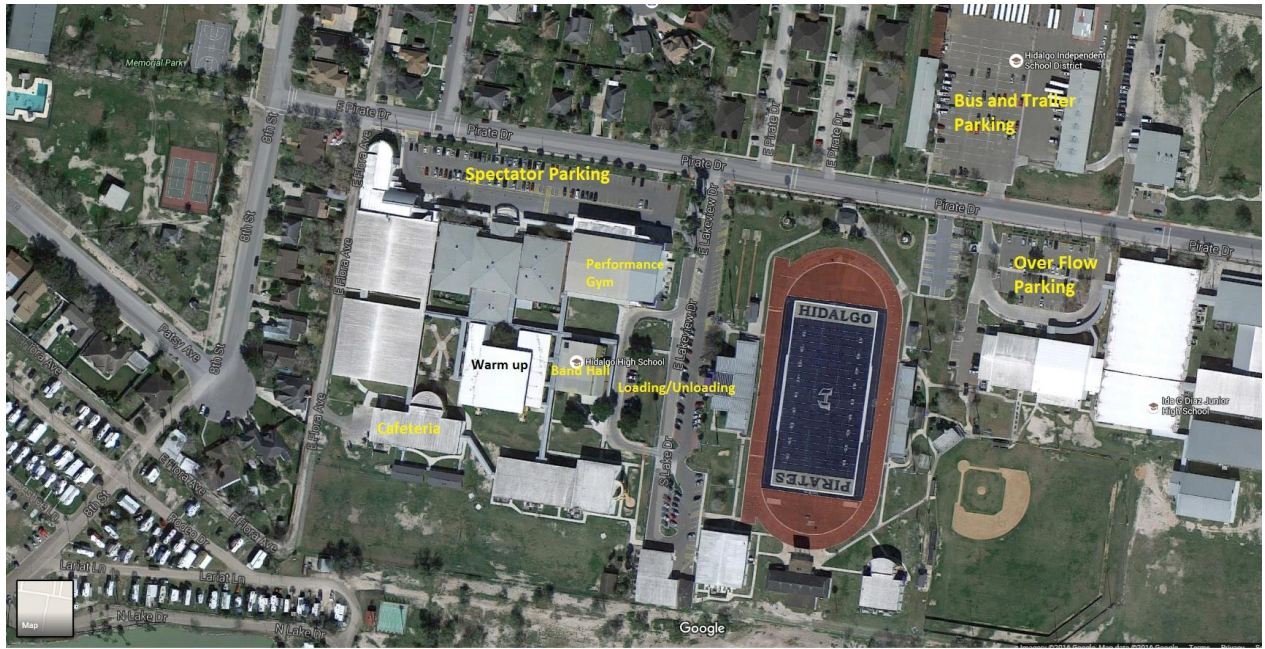
Contest Flow

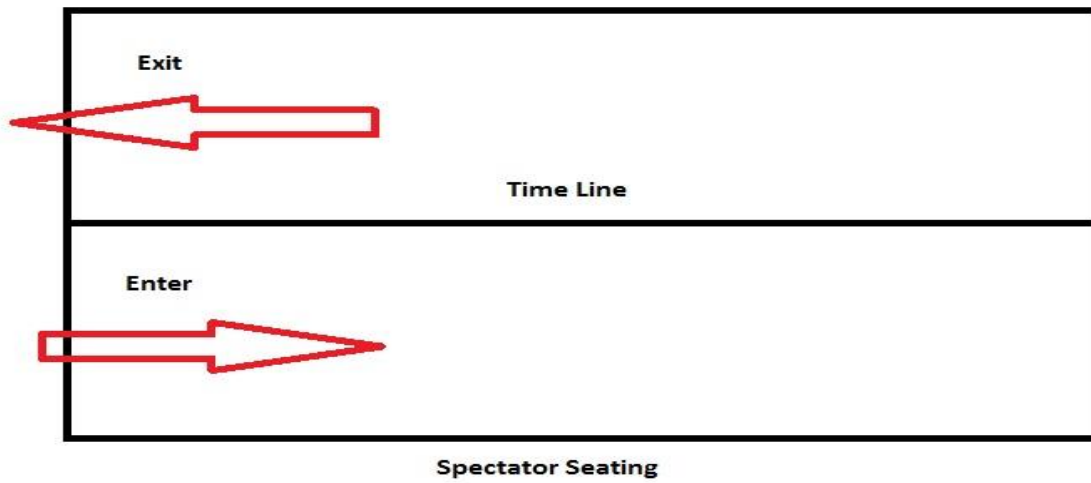
- Guard

When Leaving the cafeteria to start timed warm up, your guide will lead your unit to the dance room for body warm-up. After body warm up your guide will guide your unit out the back door of the dance room to the practice gym for equipment warm-up. After equipment warm-up your unit will be lead to the performance gym. After performance your unit will be lead out to the field to fold your floor, from there your unit will be lead back into the build to storage equipment and props. Use the main general entrance/exit to enter the gym to watch other units. Pictures and graphs below show the contest flow.

- Percussion and Winds

When Leaving the cafeteria to start timed warm up, your guide will lead your unit to the Hidalgo Band practice field or to the warm-up gym for warm-up. After warm-up your unit will be lead to the performance gym. After performance your unit will be lead out to the field to fold your floor, from there your unit will be lead back into the build to storage equipment and props. Use the main general entrance/exit to enter the gym to watch other units. Pictures and graphs below show the contest flow.





III. Post -Performance/Award Ceremony

Captains will report to the practice gym to line up for the retreat.

IV. Critique

Critique will be held in the Hidalgo Band Hall

- The Band Hall is the building next to check in.

Contact Info:

Any questions, please contact:

Denelle Acosta - Hidalgo Color Guard Director/TECA Treasurer

(859) 462-0855

dutdutdenelle@gmail.com

MEAL PRE-ORDER FORM

Chick-Fil-a sandwich, Bag of Chips, Drink

\$6

School Name _____

Contact Name _____

Contact Number _____

Quantity _____

Total x \$6 _____

Time Needed By _____

Please make all checks payable to the Hidalgo Band Boosters

Please email dutdudenelle@gmail.com with order forms.

Concessions will be available to everyone. Outside food or drink will not be allowed inside the school.