

HARLANDALE WINTER GUARD INVITATIONAL



TEXAS EDUCATIONAL COLORGUARD ASSOCIATION

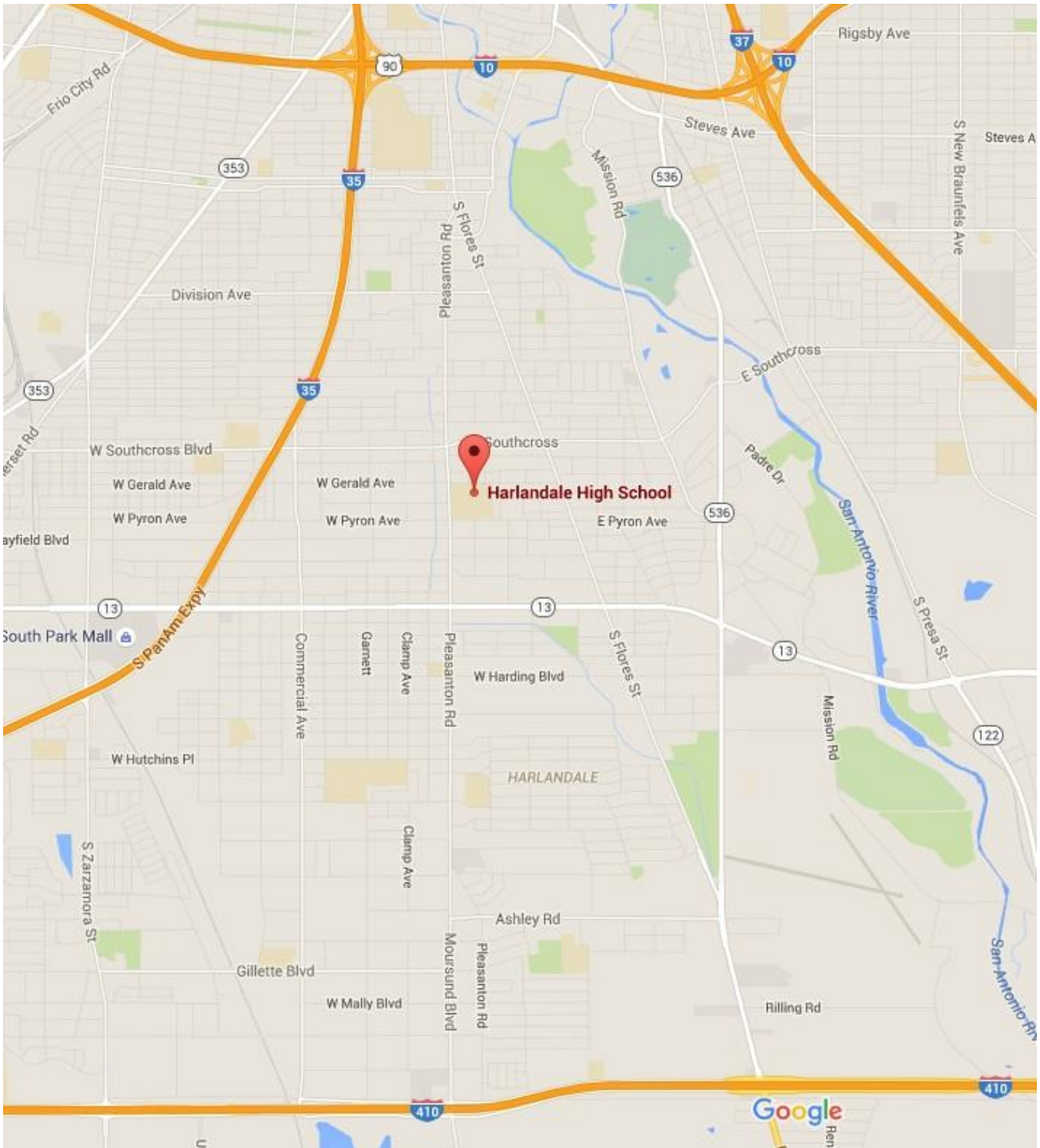
MARCH 11TH, 2016

HARLANDALE HIGH SCHOOL

114 E Gerald, San Antonio, Texas 78214

Hosted by the Harlandale High School Band Boosters

AREA MAP



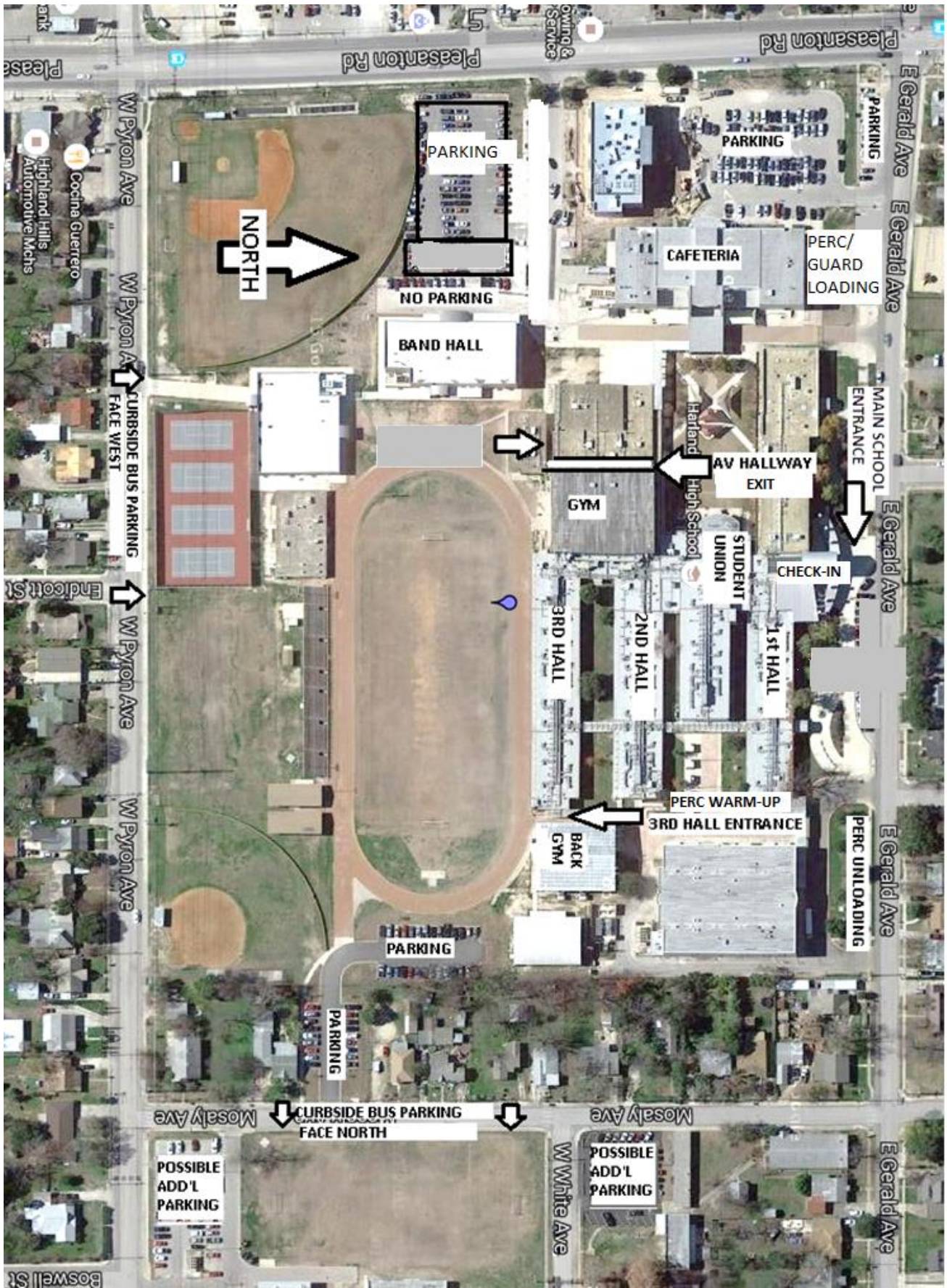
HARLANDALE HIGH SCHOOL
114 E. GERALD
San Antonio, Texas 78214

PERCUSSION INSTRUCTIONS

1. UNLOADING WILL TAKE PLACE ON THE NORTHEAST CORNER OF THE SCHOOL. STUDENTS CAN BE UNLOADED ALONG GERALD AVE. IN FRONT OF THE SCHOOL.
1. REGISTER NEAR THE 3RD HALL ENTRANCE. THE STUDENT UNION AND 1ST HALL WILL SERVE AS A HOLDING AREA FOR STUDENTS.
2. ONCE YOUR BUS IS UNLOADED IT MUST BE MOVED TO PARK CURBSIDE ALONG PYRON OR MOSALY AVE. BUSES WILL NOT BE ALLOWED IN THE PARKING LOTS.
3. ONCE YOUR TRUCK IS UNLOADED, IT MUST MOVE TO THE SOUTHWEST PARKING LOT IN FRONT OF THE BANDHALL OR PARK ALONG PYRON.
4. **EMPTY VEHICLES MUST MOVE IMMEDIATELY. BUSES WILL NOT BE ALLOWED IN THE PARKING LOTS.**
5. PERCUSSION WILL FOLLOW 3RD HALL INTO THE SCHOOL AND HOLD IN 3RD HALL AS NEEDED PRIOR TO THE PERFORMANCE. NO PLAYING WHATSOEVER ONCE YOU ARE INSIDE THE SCHOOL, UNLESS YOU ARE IN THE GYM PERFORMING. WE WILL BE USING A VERTICAL CENTERLINE, AND YOU WILL BE ENTERING FROM THE RIGHT OF THE AUDIENCE AS YOU ARE FACING THEM.
6. PERCUSSION GROUPS WILL BE DIRECTED THROUGH THE AV HALLWAY EXIT AFTER THEIR PERFORMANCE.
7. UPON EXITING YOU WILL BE DIRECTED TO THE SOUTHWEST CORNER PARKING LOT IN FRONT OF THE BANDHALL TO LOAD EQUIPMENT. YOU MUST LOAD IMMEDIATELY.

INSTRUCTIONS FOR GUARDS WHO PERFORM IN THE AFTERNOON BLOCK

1. STUDENTS MUST BE UNLOADED ALONG GERALD AVE. IN FRONT OF THE MAIN SCHOOL ENTRANCE.
2. REGISTRATION WILL BE IN THE MAIN SCHOOL ENTRANCE. 1ST HALL AND THE CAFETERIA WILL SERVE AS A HOLDING AREA FOR STUDENTS AND THEIR EQUIPMENT.
3. FLOORS/Props CAN BE UNLOADED in the front of the school and taken through first hall to the middle door allowing access to 2nd and 3rd hall, OR IN THE PERCUSSION UNLOADING AREA IF THERE IS SPACE. FLOORS/Props will be STORED IN THE 2ND and in 3rd hall only.
4. **EMPTY VEHICLES MUST MOVE IMMEDIATELY. BUSES WILL NOT BE ALLOWED IN THE PARKING LOTS.**
5. ONCE YOUR BUS IS UNLOADED IT MUST BE MOVED TO PARK CURBSIDE ALONG PYRON OR MOSALY AVE. BUSES WILL NOT BE ALLOWED IN THE PARKING LOTS.
6. GUARD WILL ENTER THROUGH THE 3RD HALL AND EXIT TO THE AV HALLWAY.
7. WE WILL BE USING A VERTICAL CENTERLINE, AND YOU WILL BE ENTERING FROM THE RIGHT OF THE AUDIENCE AS YOU ARE FACING THEM.
8. UPON EXITING YOU WILL BE DIRECTED TO THE FRONT OF THE SCHOOL LOADING AREA TO LOAD PROPS/FLOOR, YOU MUST LOAD IMMEDIATELY.



CHECK-IN

PERCUSSION

CHECK-IN AT THE ENTRANCE TO 3RD HALL

GUARDS

The check in table will be located in the MAIN SCHOOL ENTRANCE. Performing members and crew members will need to check in at the check-in table prior to warm up. **Admission will be given to 10 student crew members ONLY.** Directors should have their floor access pass. Additional wristbands may be purchased at the check in table at the cost of \$5 per student.

Performers must show the Check-in Representative that their equipment is correctly padded and taped. Maps of the school and performance times will be available.

CAFETERIA AND OTHER AREAS

An area will be set up for each scholastic organization to hold their personal items (Cafeteria). Props and larger equipment may be stored in the 2ND AND 3RD HALL. Floors will need to be stored in the 2ND AND 3RD HALL. NOTHING CAN BE STORED IN THE 3RD HALLWAY DURING THE PERCUSSION PERFORMANCE BLOCK. Floors that need to be stored during the percussion block can be placed in the 2ND HALL.

Concessions will be available to everyone outside the HS Gym (IN FRONT OF OUR 3RD HALL).

Outside food or drink will not be allowed inside the school.

The cafeteria and hallways are traffic areas only. Students and Staff will not spin, toss or maneuver equipment inside any of the buildings at any time other than in designated areas. THIS RULE WILL BE STRICTLY ENFORCED.

If you need any extra equipment warm up, you may find a suitable area outside.

WARM-UP AREAS AND OTHER PERFORMANCE NOTES

PERCUSSION

There is no specifically designated warm-up area for percussion. There are a small areas available between 1st and 2nd hall that is first come, first served.

GUARD

Body warm up will be in the Small Band Hall. Students may stretch or do a run through. No equipment will be utilized during this segment of the official warm up time. After body warm up, your guard will be led to the HHS Large Band hall and be placed in holding until their equipment warm up time starts. A sound system will be made available to you in both body and equipment warm up areas if you need one.

After your equipment warm up, your guard will be led to the performance area entrance.

You will be placed in holding near the Totem Pole until your official set up and performance time starts.

WE WILL BE UTILIZING A VERTICAL CENTER LINE FLOW FOR THE PERFORMANCE AREA.

Post-Performance

After you exit the performance area, staff members will need to make sure that all of their equipment is put away, then proceed to pick up the show music.

Captains will need to meet in the HHS Large Band Hall after the last performing group of the evening. Retreat will follow the last performing group. (Instructors may need to help with the line-up of their students)

A critique session hosted by the adjudicators and TECA will be available for those who are pre-registered. You will need to have heard your tapes before entering. Comments and score sheets will be sent electronically through Competition Suite.

If you have a problem with one of your tapes, you will need to fill out the **WGI Color Guard Instructors Evaluation Form** on **page 17** of your 2015 WGI Color Guard and Adjudication Manual and Rule Book.

III. Admission (Spectators)

\$7

Children 5 & under are FREE

Cash & Credit Cards are accepted for SHIRTS AND ADMISSION ONLY

IV. Concessions

Concessions will be available throughout the day.

Outside food or drink will not be allowed inside the school. CASH ONLY

V. Souvenirs and Other Stuff

Souvenirs will be available as well, so bring your extra \$\$\$!!!

Shout outs will also be available for purchase during the competition.

VI. Online help and Information

Show Host Contact:

Ray Ramirez Director of Guards

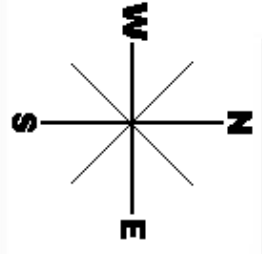
rramirez_201403@yahoo.com

Cell 210-667-5121

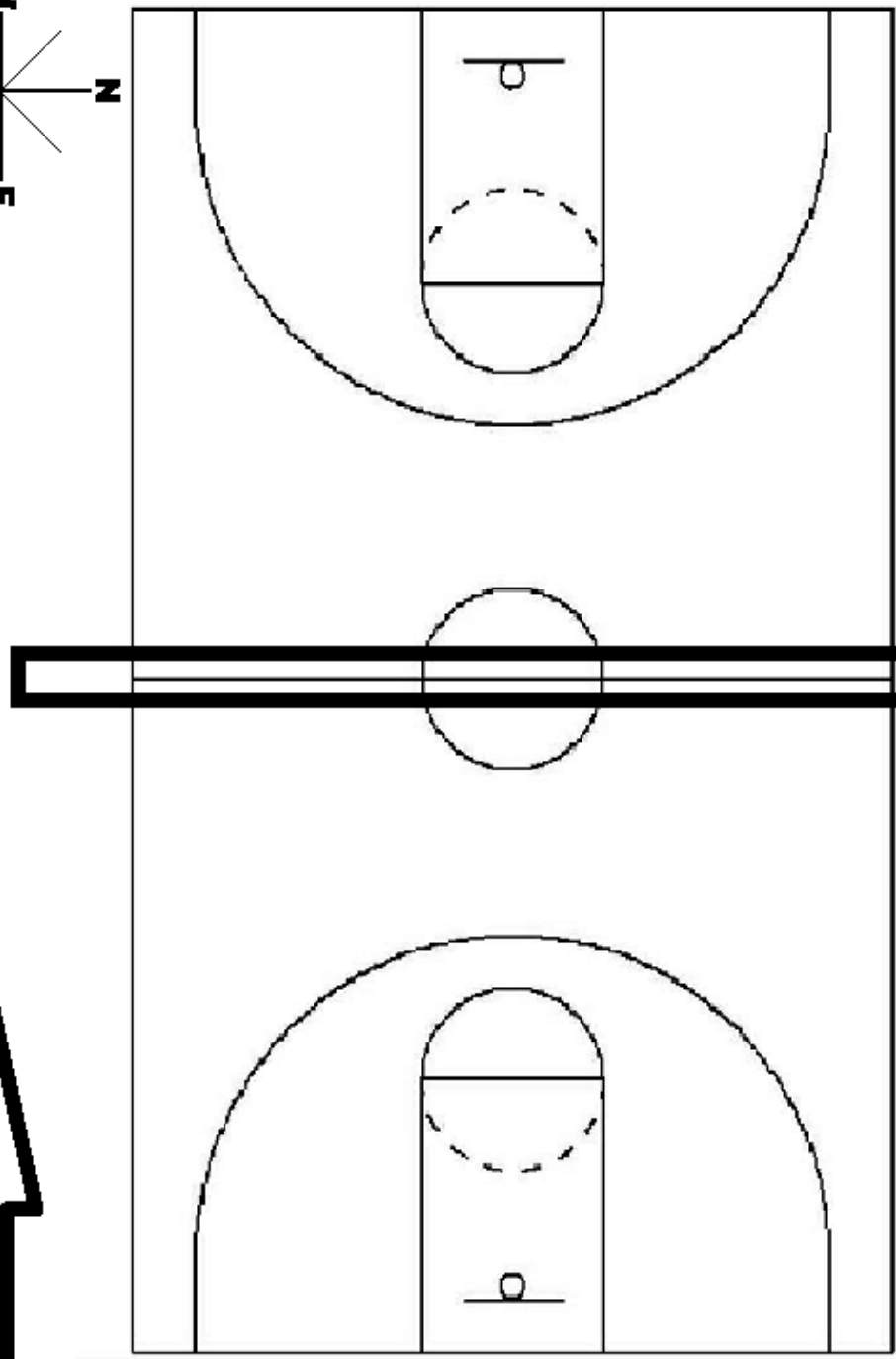
You may get online information and help via the TECA website at

<http://www.go-teca.org>

GYM FLOW



VERTICAL CENTERLINE



OUT TO AV HALLWAY

AUDIENCE

IN FROM 3RD HALL



TECA CONCESSION PRICE LIST
\$7 ADMISSION
5 YEARS AND UNDER ARE FREE

DRINKS \$1.00 soda, water, coffee, Ice tea

POWERADE \$2.00

BREAKFAST TACOS \$2.00

Bacon & Egg/ Potato & Egg/ Bean & Cheese

GRILLED HAMBURGER \$4.00

Choice of cheese, tomato, pickle, onion

NACHOS \$3.00

FRITO PIE \$3.00

with chili and cheese

HOT DOG \$2.00

chili or cheese

HOT CHEETOS \$2.00

with cheese

COOKIES \$1.00

CANDY \$1.00

PICKLES \$1.00

