

**Canyon High School Band Boosters
Welcomes you to
TECA Sanctioned Colorguard performances
at Canyon High School**



**Canyon High School,
New Braunfels, Texas
January 28, 2017**

Location, Directions and Map

This contest will be located at Canyon High School. The schools' address is

1510 IH 35 North, New Braunfels TX, 78130

From San Antonio or the Laredo Area

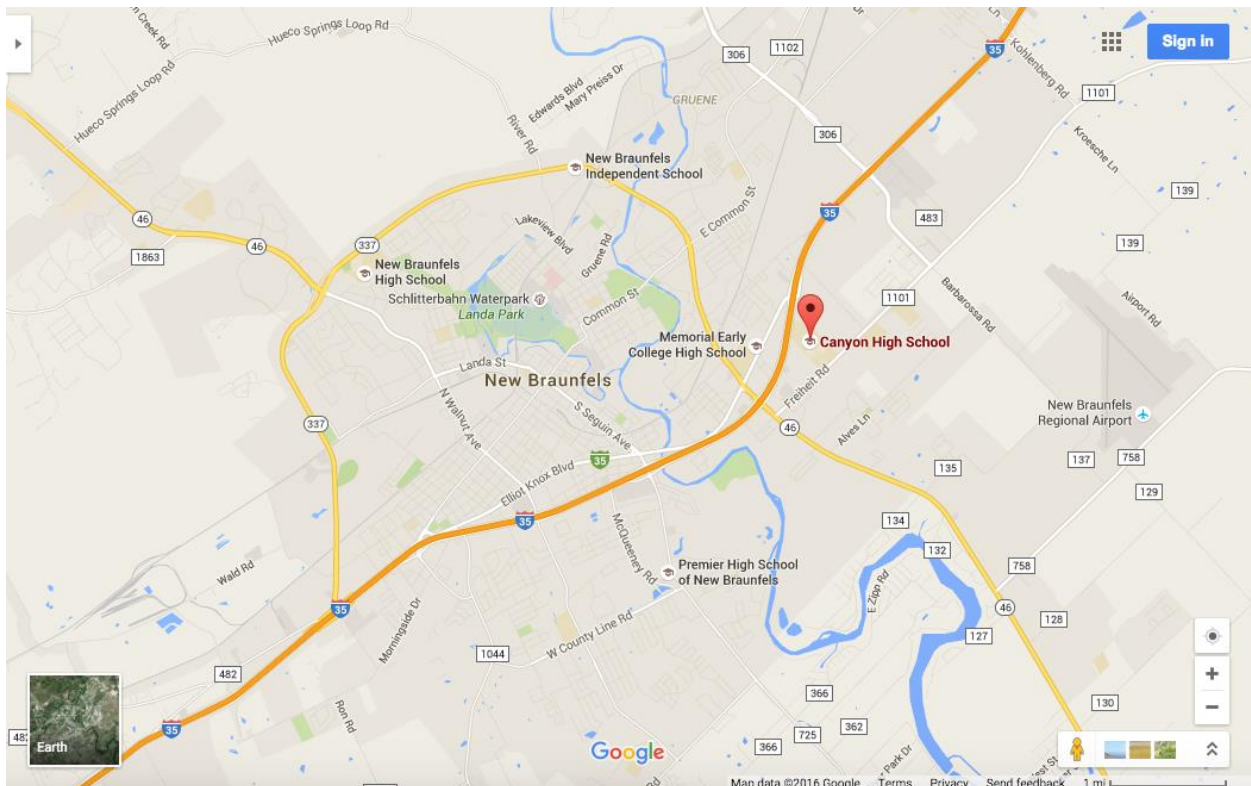
Take 35 N to New Braunfels, TX

Exit 189 and proceed straight through the stoplight. Once through the stop light you will want to move to the furthest right lane. Trucks and Busses will enter the parking lot through the first entrance off of the I 35 frontage road. It is directly past the COMAL ISD Support Services Building.

From the RGV Area

Take 37N to San Antonio

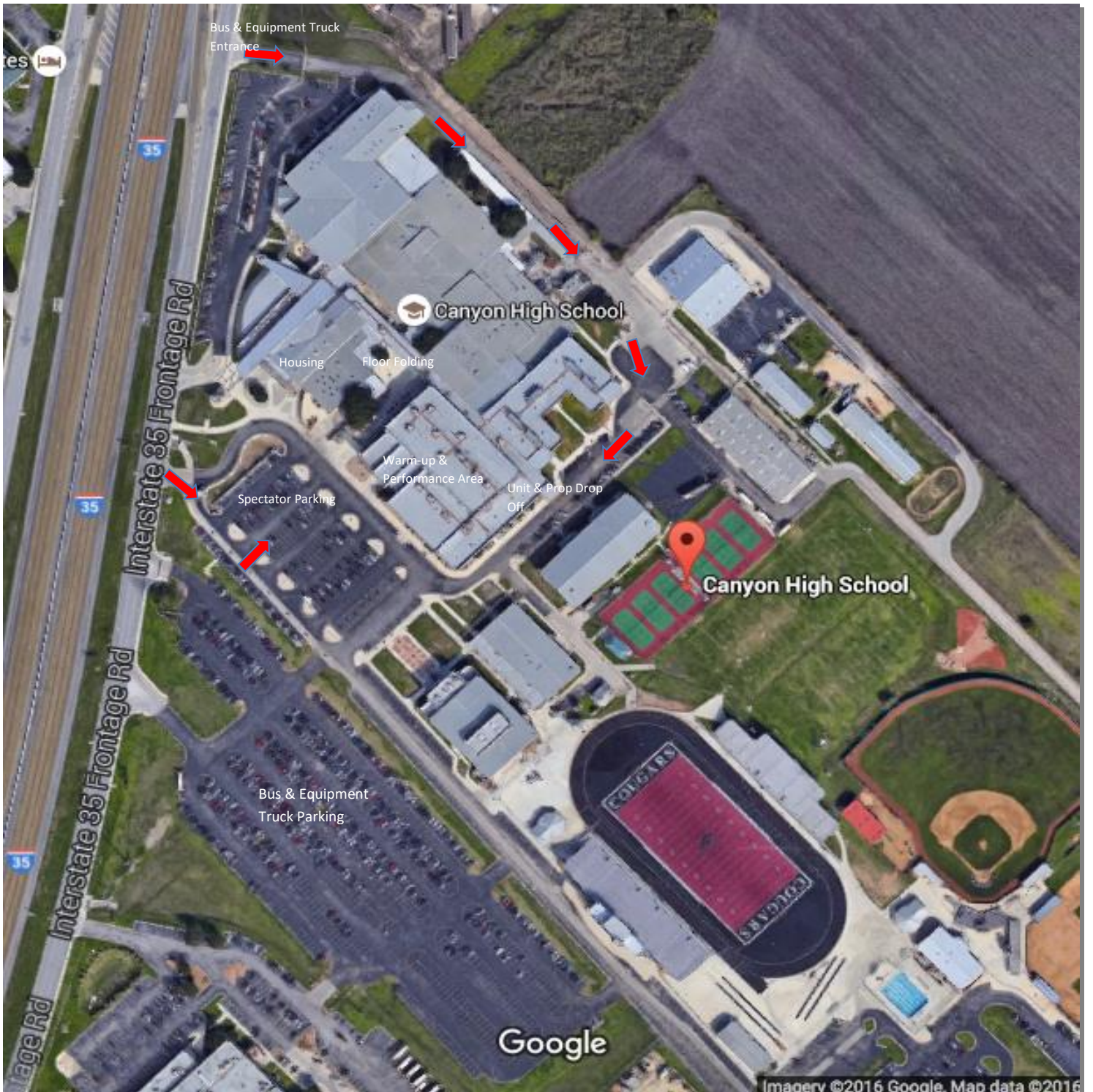
Exit 189 and proceed straight through the stoplight. Once through the stop light you will want to move to the furthest right lane. Trucks and Busses will enter the parking lot through the first entrance off of the I 35 frontage road. It is directly past the COMAL ISD Support Services Building.



I. Contest Flow

All contest rules and regulations from the TECA Constitution and Bi-Laws and the WGI Rule Book will be followed.

All spectator parking will be in the lower parking lot of the school - It's the closest to the Cougar Den (Gym) entrance. Over flow will continue into the top parking lot.



Check-In/Drop-Off Procedures

Performer/Prop Drop-Off will be located near the Grand Canyon Hallway. Busses may drop members off then continue to upper parking lot to park in designated area. Check-in table will be located inside the door labeled Unit Check-In to the right of the Grand Canyon Hallway. A Check-in Representative will be there to ensure that all equipment is properly taped according to TECA and WGI rulebook specifications. Units will be escorted to their designated area in Cougar Café. Props will be unloaded into the Grand Canyon Hallway to the left of the Unit Check-in location.

Performing Members, Crew and Staff Admission

Performing members and crewmembers will need to check in at the "check in" table prior to warm up. Admission will be given to directors, all performers, and up to 10 student crewmembers.

Cougar Café:

Tables will be setup for each scholastic organization. Props and Floors may be brought in through the Grand Canyon Hallway located between the main building and the music building and stored in the Grand Canyon Hallway. Props need to be against the wall and must not block traffic flow.

Concessions will be available. **Outside food or drink will not be allowed inside the school.**

The Cougar Café as well as the Grand Canyon Hallway are traffic areas only. Students and Staff will not spin, maneuver, or toss equipment inside.

Warm-Ups

Body Warm-up will be in the Dance Studio. Students may stretch or do a body type of run through.

Equipment Warm-up will be in the Practice Gym.

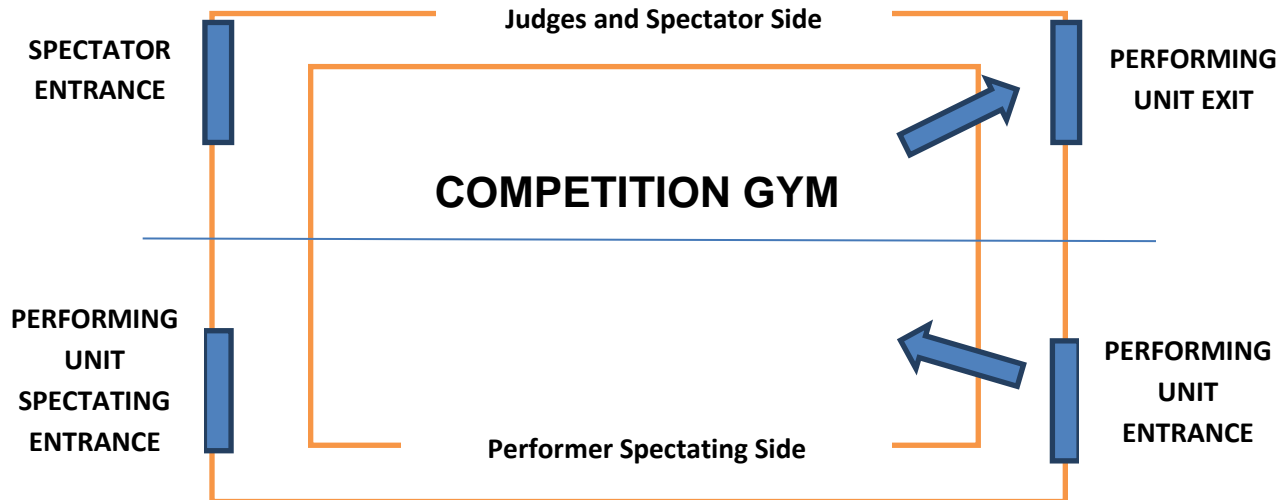
Official Warm Up Time

Inside Warm-Up and Performance Notes

If you will be utilizing the inside warm-up time please meet your monitor at the check-in table 5 minutes prior to your "Ready" time. Your group will be led from the check-in area to the warm up gym and be placed in holding until their warm-up time starts. After your inside warm-up, your group will be led to the performance area. You will be placed in holding until your official set up and performance time starts.

If you will NOT be utilizing the inside warm-up time please meet your monitor at the check-in table 5 minutes prior to your "Holding" time. Your group will be led from the check-in area directly to the performance gym and be placed in holding until their official set up and performance time begins.

WE WILL BE UTILIZING A HORIZONTAL CENTER LINE FLOW FOR THE PERFORMANCE AREA. From audience perspective, you will enter back of Side one (left) and exit front of Side one (left).



Post Performance

After you exit the performance area, staff and members will need to make sure that all of their instruments and equipment are put away.

Admission:

Students- \$3.00

Adults- \$5.00

Concessions

Concessions will be available in the Cougar Den and in the Cougar Cafe. **Outside food or drink will not be allowed inside the school at anytime during the day.**

You may enjoy the tables in the outside courtyard just be mindful of competing groups exiting the building.

Concessions will include cheeseburgers, hamburgers, hot dogs, nachos, pop corn, chips, assortment of candy, sweets, and drinks.

Souviés and Other Stuff

Air grams will be available for your group to be supported by family and friends.

Please encourage family and friends to visit the vendors setup in the Spectator entrance area!

If you need further information, please contact Amanda Fonner at Amanda.fonner@comalisd.org or at 830-221-2438.

MEAL DEAL ORDER FORM

MEAL DEALS ARE AVAILABLE FOR ADVANCED PURCHASE ONLY!

These deals will not be available on the day of the event without pre-purchase. Please contact Amanda Fonner at Amanda.fonner@comalisd.org for more information.

ALL MEAL DEALS ARE \$6.00

A - Hamburger Meal Deal: Hamburger/Cheeseburger + Chips + Choice of drink

B - Hot Dog/Sausage Wrap Meal Deal: Sausage Wrap + Chips + Choice of drink

Choice of drink is can soda or water

Name of Group/School: _____

Director's Name: _____

| Meal Option | Price | Quantity | Total |
|------------------------|--------------|-----------------|--------------|
| A- Hamburger | \$6.00 | | |
| B- Hot Dog/ Sausage | \$6.00 | | |
| | Total | | |

Please make checks payable to "Canyon Band Boosters"
Order forms and checks may be mailed to:

Canyon High School Band
Attn: Amanda Fonner
1510 IH N 35
New Braunfels, Texas 78130

Or, orders may be emailed to Amanda.fonner@comalisd.org or and payment made the day of the event.

*****ORDERS MUST BE RECEIVED BY January 20, 2017*****