

**Saturday, January 17, 2009**

**Economedes High School Gymnasium**

**A TECA Sanctioned Contest hosted by the  
Economedes High School Band Boosters and the  
Economedes High School FORTE Winter Guard**



**Economedes Winter Guard Invitational**

**January 17, 2009**

**Solo & Ensemble Competition 1:00 PM**

**Unit Competition 2:30 PM**

# **Economedes Contest Information**

## **I. Location, Directors & Map**

**The Economedes Winter Guard Invitational will be held at Economedes High School which is located at 1414 N Alamo Rd, Edinburg, Texas 78541.**

**From San Antonio or points north;**

- **Take IH 35 South until it merges into IH 37 South**
- **Take IH 37 South until you reach EXIT 72 for TX 281 South towards ALICE/THREE RIVERS**
- **Merge onto US-281 South**
- **Continue on US 281 through Three Rivers, through George West, through Premont, through Falfurrias, and into EDINBURG**
- **When arriving in Edinburg, exit Schunior**
- **Go past the stop sign and at the next light (Schunior) turn left going East**
- **Continue on Schunior until you reach Alamo Rd and turn left (Alamo Rd will be the third light after you cross the expressway)**
- **Economedes High School will be on your left and side**

**From Corpus Christi:**

- **Take IH 37 South**
- **Take exit 14A to merge onto US-77 South towards Robstown/ Kingsville**
- **Continue on US-77 until you reach Rivera**
- **In Rivera turn right onto TX-285**
- **Continue on TX-285 until you reach US 281 in Falfurrias**
- **Turn left onto US-281 and continue until you reach EDINBURG**
- **When entering Edinburg, exit Schunior**
- **Go past the stop sign and at the next light (Schunior) turn left going East**
- **Continue on Schunior until you reach Alamo Rd and turn left (Alamo Rd will be the third light after you cross the expressway)**
- **Economedes High School will be on your left and side**

**From Rio Grande Valley;**

- **Take US 281 North until you reach EDINBURG**
- **When arriving in Edinburg, take the Schunior Exit**
- **Turn Right on Schunior**
- **Continue on Schunior until you reach Alamo Rd and turn left (Alamo Rd will be the third light after you turn right onto Schunior)**
- **Economedes High School will be on your left and side**

**Parking will be in the back of the school. Busses will unload at the north end of the school. Check-In will be in the covered area.**

## **II. Contest Flow**

**All Contest rules and regulations from the 2009 TECA Constitution and Bi-Laws and the 2009 WGI Rule Book will be followed.**

### **Parking:**

- All spectator and unit parking will be in the back (east) of the school. All props, performance shoes and equipment must be padded and taped according to the TECA and WGI rule book specifications. Please refer to the 2009 WGI Color Guard and Adjudication Manual and Rule Book.

### **Check-In**

- The check in table will be located on the north side of the gym. Performers must show the Check in representative that their equipment is correctly padded and taped. Maps of the school and performance times will be available.

### **Guard, Crew and Staff Admission**

- Solo and Ensemble Contest
  - i. Solo and Ensemble performers who have paid their entry fee to TECA will be admitted in the gym. 1 staff pass will be given during the Solo and Ensemble check in session for entry into the gym.
- Unit Competition
  - i. Performing members and crew members will need to check in at the check in table prior to warm up. Admission will be given to 1 director plus 7 student crew members.

### **Cafeteria Area/Colorguard Area**

- Tables and areas will be set up for each scholastic organization. Props/Floors and larger equipment may be stored in the hallway of the boys side of the athletic facility. The guards will pass through this hallway on the way to performance so that props, floors, and large equipment will be easily accessible right before entrance onto the floor.
- Concessions will be available to everyone outside the HS gym.

**The cafeteria is a traffic area only. Students and Staff will not spin, toss or maneuver equipment inside any of the buildings at any time other than in designated areas. THIS RULE WILL BE STRICTLY ENFORCED.**

If you need any extra equipment warm up, you may do so outside in an open area with minimal foot traffic.

## **(Official Warm Up Time)**

### **Body Warm Up, Equipment Warm Up and Performance Notes**

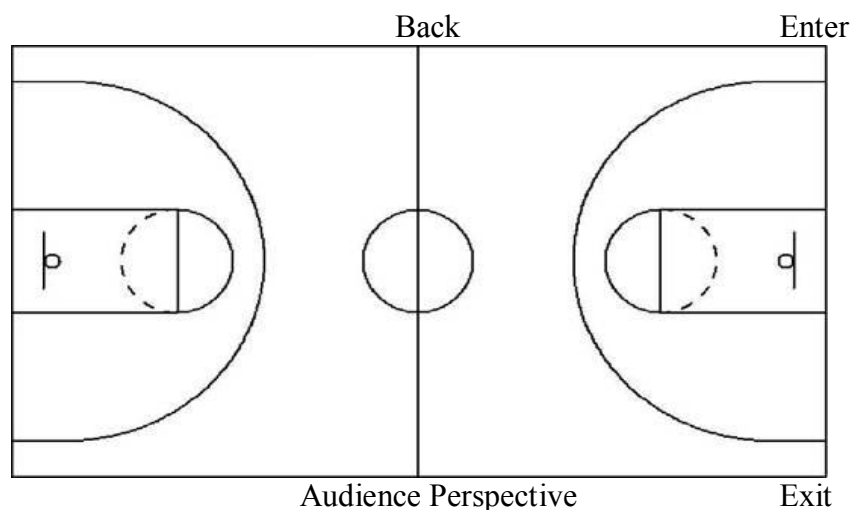
Body warm up will be in the JEHS Band Hall-Mariachi Room. Students may stretch or do a body type of run through. No equipment will be utilized during this segment of the official warm up time. After body warm up, your guard will be led to the JEHS Band Hall- Band Room and be placed in holding until their warm up time starts. A sound system will be made available to you in both body and equipment warm up areas if you need one.

After your equipment warm up, your guard will be led to the performance area.

You will be placed in holding until your official set up and performance time starts.

### **WE WILL BE UTILIZING A VERTICAL CENTER LINE FLOW FOR THE PERFORMANCE AREA.**

From the audience perspective, you will enter from the back right hand side and you will exit from the front right hand side.



## **Post Performance**

- After you exit the performance area, staff members will need to make sure that all of their equipment is put away, then proceed to the sound table and pick up your judge's tapes.
- Students will need to start their "line up" in the grassy area south of the gym and north of the administration building during the last classification of the evening. Retreat will follow a special performance by the JEHS Folkorico Team in the gym. (Instructors may need to help with the line up of their students)
- As always, there will be a critique session hosted by the adjudicators and TECA for you to attend. You will need to have heard your tapes before entering. If you have a problem with one of your tapes, you will need to fill out the WGI Color Guard Instructors Evaluation Form on page 17 of your 2009 WGI Color Guard and Adjudication Manual and Rule Book.

### **III. Admission**

Solo and Ensemble Contest (Early Afternoon)

Student \$1.00 Adult \$2.00

Unit Contest (Afternoon)

Student \$2.50 Adult \$5.00

### **IV. Concessions**

- Concessions will be available. Concessions will consist of snack items. Outside food or drink will not be allowed inside of the gym or cafeteria.

### **V. Souvies and Other Stuff**

- Souvenirs will be available as well, so bring you extra cash!!!
- Air Grams will be sold just outside of the gym for \$1.00

### **VI. Online help and Information**

- You may get online information and help via the TECA website at <http://www.go-teca.org>